

See discussions, stats, and author profiles for this publication at: <https://www.researchgate.net/publication/312575027>

# Evolutionary history of *Podarcis tiliguerta* on Corsica and Sardinia

Article in *BMC Evolutionary Biology* · December 2017

DOI: 10.1186/s12862-016-0860-4

CITATIONS

2

READS

328

10 authors, including:



**Virginia Rodriguez**

University of the Balearic Islands

94 PUBLICATIONS 164 CITATIONS

[SEE PROFILE](#)



**Joana Maria Buades**

University of the Balearic Islands

75 PUBLICATIONS 16 CITATIONS

[SEE PROFILE](#)



**Richard P Brown**

Liverpool John Moores University

235 PUBLICATIONS 1,765 CITATIONS

[SEE PROFILE](#)

Some of the authors of this publication are also working on these related projects:



Genetic structure of Jewish Diaspora [View project](#)



PhD project: Assessment of the status of natural populations with four indicators: Application to an insular species [View project](#)

RESEARCH ARTICLE

Open Access

# Evolutionary history of *Podarcis tiliguerta* on Corsica and Sardinia



V. Rodríguez<sup>1†</sup>, J. M. Buades<sup>1†</sup>, R. P. Brown<sup>2</sup>, B. Terrasa<sup>1</sup>, V. Pérez-Mellado<sup>3</sup>, C. Corti<sup>4</sup>, M. Delaugerre<sup>5</sup>, J. A. Castro<sup>1</sup>, A. Picornell<sup>1</sup> and M. M. Ramon<sup>1\*</sup>

## Abstract

**Background:** *Podarcis tiliguerta* is a wall lizard endemic to the Mediterranean islands of Corsica and Sardinia. Previous findings of high mtDNA and morphological diversity have led to the suggestion that it may represent a species complex. Here, we analysed mitochondrial and nuclear markers (mtDNA, 3110 bp; 6 nDNA loci, 3961 bp) in *P. tiliguerta* sampled from thirty-two localities across Corsica and Sardinia.

**Results:** We find much greater intraspecific genetic divergence than between sister species of other Mediterranean island *Podarcis*, i.e., between *P. lilfordi* and *P. pityusensis*. We detected three mtDNA clusters in Corsica (North, South-East and South-West) and either two or three in Sardinia (North vs. South) depending on the clustering method. Only one or two nDNA groups were identified within each main island (again, depending on the method). A Bayesian time-calibrated multispecies coalescent tree was obtained from mtDNA and provided statistical support for a Miocene origin of the species (13.87 Ma, 95% HPD: 18.30–10.77 Ma). The posterior mean divergence time for the Corsican and Sardinian lineages was 12.75 Ma ago (95% HPD: 16.94–9.04 Ma).

**Conclusion:** The results support the evolutionary distinctiveness of Corsican and Sardinian populations and also indicate a lack of post-divergence migration despite periods of contact being possible. Further to this, species delimitation analyses of Corsican and Sardinian lineages provided statistical support for their recognition as distinct (sister) taxa. Our results provide new insights into the biogeography of the Mediterranean biodiversity hotspot, and contribute important findings relevant to the systematics and evolution of this speciose lizard genus.

**Keywords:** *Podarcis tiliguerta*, *Lacertidae*, Corsica and Sardinia Islands, Mitochondrial DNA, Nuclear DNA, Species tree

## Background

Islands provide many of the world's biodiversity hotspots. They continuously generate new species with the term "speciation machines" having been coined to describe this phenomenon [1]. These high speciation rates are facilitated by specific island characteristics that lead to a wealth of ecological, biogeographic and evolutionary processes. These include: natural fragmentation, long term isolation, high altitudes creating habitat heterogeneity, complex intra-island landscapes, and island emergence due to volcanism and eustatic sea-level changes.

The Mediterranean basin was one of the first 25 Global Biodiversity Hotspots to be named [2] and is characterized by substantial island diversity [3]. The Tyrrhenian region within the Mediterranean is particularly diverse due to the influence of complex paleogeographical and historical factors [4, 5]. It includes Sardinia and Corsica, two of the largest and highest (1834 m and 2710 m, respectively), Mediterranean Islands, which are separated by a strait of only 11 km. They contain high levels of endemism including several hundred endemic plants. Geological history has undoubtedly played a role in generating this diversity. A land bridge maintained the connection between the islands and Europe [6] until their separation, completed 9 Ma ago [7, 8]. This was subsequently lost although connections between the Corsica–Sardinia archipelago and Europe and North Africa were re-established through desiccation of the Mediterranean basin during the Messinian Salinity Crisis (MSC; 5.96–5.33 Ma) [9, 10]. Corsica and

\* Correspondence: cori.ramon@uib.es

†Equal contributors

<sup>1</sup>Laboratori de Genètica, Universitat de les Illes Balears, Palma de Mallorca, Spain

Full list of author information is available at the end of the article



Sardinia have since been temporarily connected as a result of more minor changes in sea level during glacial periods in the Pleistocene, with the last contact being during the Last Glacial Maximum (LGM) [11].

The lizard genus *Podarcis* encompasses about 19 species and is widespread across the Mediterranean. *Podarcis tiliguerta* is endemic to Corsica and Sardinia. It exhibits a great intraspecific variability in morphological traits, especially colour pattern and melanism, the latter found within populations from small islands away from the main islands [12–17]. This variation has led to the description of several microinsular subspecies [18, 19]. Morphological [20, 21] and genetic studies, based on both allozymes [22] and mitochondrial sequences [23–25], have evidenced the existence of two or possibly three divergent genetic clusters within the Corsica-Sardinia archipelago. The underlying reasons for this divergence remain unexplained, but its magnitude has led some authors to suggest that *P. tiliguerta* might represent an insular species complex [20, 24]. Similar findings have been documented for other *Podarcis* from much wider geographic areas, e.g., *P. hispanica*, from the Iberian peninsula [26] and *P. erhardii*, from Greece [27]. Objective coalescent-based statistical analyses of species delimitation may provide an important step towards robust assignment of new taxonomic units based on genetic groups within the putative complex.

This study aims to provide the most detailed analysis of genetic variation of *P. tiliguerta* to date, using both mitochondrial (mtDNA) and nuclear DNA (nDNA) markers. We use these data to reveal new insights into the patterns and causes of the genetic diversity. We examine two important aspects of the evolutionary history of *P. tiliguerta*, namely the number of lineages and timing of divergence between these lineages and from other *Podarcis*. In addition, we investigate the historical biogeography of *P. tiliguerta* in relation to known physical changes in the region.

## Methods

### Sampling

Forty-one *Podarcis tiliguerta* were captured under license from 15 localities in Corsica, 13 localities in Sardinia (in May 2011) and four offshore islands and islets (September 2012) by noosing, with the aim of covering the main geographical regions (Fig. 1 and Table 1). Tail-tips were removed and stored in 100% ethanol before releasing individuals at sites of capture.

### DNA Amplification and sequencing

A standard phenol-chloroform protocol was used for DNA extraction [28]. Six non-overlapping mtDNA fragments were amplified and sequenced for each

specimen containing sequences from the following genes: i) partial 12S rRNA, ii) partial tRNA<sub>Glu</sub> and partial cytochrome b (cytb), iii) partial cytb and partial tRNA<sub>Thr</sub>, iv) partial control region (CR), v) two partial subunits of the NADH dehydrogenase gene and associated tRNAs (referred to as ND1, ND2, tRNA<sub>Ile</sub>, tRNA<sub>Gln</sub>, and tRNA<sub>Met</sub>) and vi) partial 16S rRNA. Primers and amplification conditions are the same as those used in our previous studies of *Podarcis* [29–31] (see Additional file 1), with the exception of the light strand primer (L14143; see Additional file 1) for amplification of fragment (ii) (above) in the Sardinian specimens. The 16S rRNA primers were obtained from Carranza et al. [32].

Six partial nuclear genes were sequenced: i) melanocortin-1 receptor gene (*MC1R*), ii) recombination-activating gene 1 (*RAG1*), iii) apolipoprotein B gene *APOB28*, iv) lipoprotein gene *BLC9L*, v) transcription factor gene *KIAA2018* and vi) kinesin family member *KIF24*. Primers [33–35] are described in Additional file 1.

Sequencing of both strands of PCR products was carried out on an automated ABI 3130 sequencer (Applied Biosystems, Foster City, CA, USA) using a BigDye<sup>®</sup> Terminator v. 3.1 Cycle sequencing kit (Applied Biosystems, Foster City, CA, USA), and edited and aligned using BioEdit v.7.0.5.2. [36].

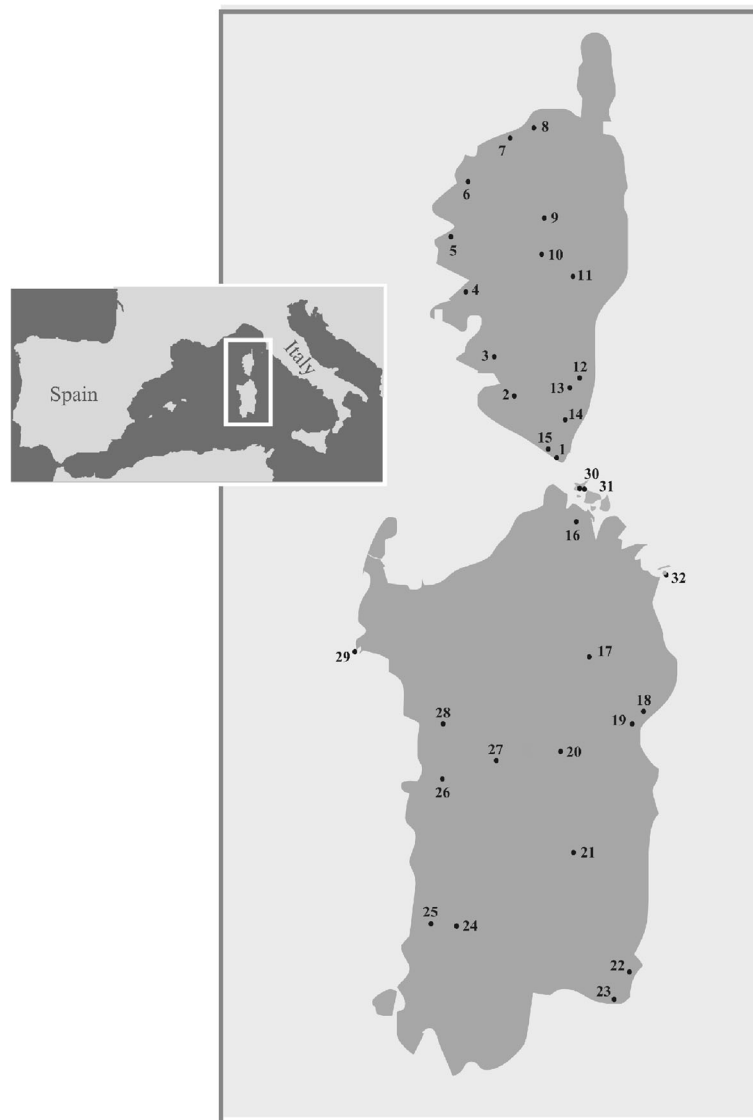
### Analyses of genetic variability and structuring

DnaSP v.5.10.01 [37] was used to obtain basic genetic diversity indices, test for neutrality and phase nuclear data. Potential recombination events were assessed using the Pairwise Homoplasy Index (phi) test [38] implemented in SplitsTree v. 4 [39].

Relationships between nuclear DNA haplotypes were explored using statistical parsimony networks, with a 95% connection limit (program: TCS v.1.21 [40]).

Analysis of molecular variance (AMOVA) (program: Arlequin v.3.1.1 [41]) was used to examine genetic structuring between primary geographic groups (Corsica vs. Sardinia and Sardinian islands).

Bayesian phylogeographical and ecological clustering (BPEC) [42, 43] was used to identify genetically distinct geographical population clusters in Corsica and Sardinia. BPEC relies on parsimony in order to reduce the number of candidate trees. Different haplotype trees and migration events are explored through the Markov chain Monte Carlo (MCMC) sampler. Migration events are assumed to occur when a haplotype (with or without a mutation from its parent haplotype) migrates to a new geographical cluster. Locations were specified as latitudes and longitudes recorded during fieldwork using a motion X-GPS HD V21.0 Build 1737R (Fullpower Technologies Inc.). For each run, a strict parsimony criterion was applied and the maximum number of migrations



**Fig. 1** Sites at which *Podarcis tiliguerta* were sampled in Corsica, Sardinia and adjacent islands

was 4. The MCMC chain was run for 10 million iterations with 20,000 steps saved. Separate analyses were performed on Corsica and Sardinia. A subsample of 1371 mtDNA sites were selected for this analysis due to high levels of mtDNA divergence (saturation of third codon positions and other regions were detected using an appropriate test [44, 45]). The analysed sequence comprised: 12S rRNA (359 bp), CR (465 bp) and cytb codon positions 1 and 2 (548 bp). The geographical distributions of alleles were similarly analyzed for each nuclear locus, independently.

For comparison, an alternative genetic clustering procedure implemented within the program BAPS v.5.3 [46] was used to infer population structure without reference to geographical location. It was applied to all nuclear

markers together, and to mtDNA alone. The number of clusters was determined and admixture analyses were executed to infer the ancestral source of the samples (without priors on geographic location).

#### Species phylogeny, divergence times and species delimitation

The multispecies coalescent approach implemented in \*BEAST v. 1.7.4 [47, 48]; was used to estimate divergence times and phylogenetic relationship between specific mitochondrial lineages from the main islands, Corsica and Sardinia (with surrounding islets). The method allows estimation of divergence times while taking into account ancestral polymorphism. However, it often suffers from problems associated with prior

**Table 1** Localities and *P. tiliguerta* specimens sampled

	Localities	Samples
Corsica Island		
1	Bonifacio	TCO1/17
2	Sartène	TCO2
3	Filitosa	TCO3
4	Sant Bastiano (Calcatoggio)	TCO4
5	Les Chalanches (Piana)	TCO5
6	Casa Vecchia (Calvi)	TCO6
7	L'Île Rousse	TCO7
8	Pietra Moneta	TCO8
9	Corte	TCO9/18
10	Vivarío	TCO10
11	Ghisonaccia	TCO11/19
12	Ribba (San Cavino Di Carbini)	TCO12
13	Casteddu d'Araghju (Lecci)	TCO13
14	Chera (Sotta)	TCO14
15	La Trinité (Bonifacio)	TCO20/21
Sardinia Island		
16	Gallura	TSA3
17	Romanzesu (Bitti Nuoro)	TSA1
18	Dorgali (Nuoro)	TSA11
19	Su Gologone (Oliena Nuoro)	TSA10
20	Fonni	TSA5
21	Flumendosa lake (Cagliari)	TSA13
22	Costa Rei (Cagliari)	TSA19
23	Villasimius (Cagliari)	TSA12/18
24	Locanda dil Parco (foresta demaniale di Montimannu, Villacidro)	TSA15
25	Fluminimaggiore	TSA20
26	Narbolia (Oristano)	TSA17
27	Nuraghe Sorradile (Oristano)	TSA2
28	Nuraghe Nuradeo	TSA4
Sardinian islands and islets		
29	Foradada Island (Alghero Sassari)	Tf1–3
30	Paduleddi islet (La Maddalena archipelago)	Tp1–3
31	Stramanari islet (La Maddalena archipelago)	Ts1
32	Molara Island	TSA8

specifications [49] and achieving good mixing of the MCMC chain (particularly when multiple loci are analysed). Also, the inclusion of several poorly informative nuclear markers could have a substantial and potentially undesirable impact on the estimated divergence times [50]. For these reasons, we included only mtDNA in the analysis.

Eight partitions were used to account for heterogeneity in sequence evolution and suitable models for each

partition were identified using jModeltest v.0.1.1 [51] (AICc criterion, i.e., Akaike Information Criterion corrected for small samples). We partitioned the sequence by grouping functionally similar sites from specific regions as they should have similar properties (rates in particular). These were: i) 12S rRNA, ii) CR, iii) all tRNAs, iv) 1<sup>st</sup> and 2<sup>nd</sup> codon positions of the ND1/ND2 sequences, v) 3<sup>rd</sup> codon position of ND1/ND2, vi) 1<sup>st</sup> codon position of cytb, vii) 2<sup>nd</sup> codon position of cytb, viii) 3<sup>rd</sup> codon position of cytb. When the selected model was not available in \*BEAST, we used the most similar available model.

We included mtDNA from all *P. tiliguerta* samples together with homologous sequences from two species that comprise a sister lineage to *P. tiliguerta*: *P. lilfordi* and *P. pityusensis* [52]. Inclusion of these taxa allowed incorporation of a time-calibrated node in the analysis [31, 53] (see Additional file 2 for GenBank accession numbers). The age of the (*P. lilfordi*, *P. pityusensis*) node on the population was constrained using the normal distribution N (5.325, 0.0001), where 1 unit = 1 Ma. The MSC is a well-known physical event in the Mediterranean and ended with very rapidly rising sea levels after the opening of the Mediterranean-Atlantic connection. Some studies have suggested that refilling of the basin may have only taken only a few thousand years [9, 10, 54]. This would have separated the Gymnesic and Pityusic Islands. Evidence from other studies (e.g., [55]) indicates the suitability of narrow time constraints on (Gymnesic, Pityusic) nodes. Refilling has been dated at 5.33 Ma [9] and given the deep intermediate channel between the island groups and the evidence of a very rapid refilling of the basin, the narrow normal distribution around a mean of 5.325 Ma would appear suitable.

A strict clock model was used in \*BEAST (see [56]), and the tree prior was specified by a Yule process. The MCMC chain was run for 300 million generations sampled every 10,000 steps. Tracer v. 1.5 [57] allowed visual inspection of marginal posteriors. TreeAnnotator (BEAST package) was used to combine and analyse the posterior tree samples at stationarity (trees were combined using the maximum sum of clade credibilities criterion).

Species delimitation was examined using three different approaches. First the Bayesian Phylogenetics and Phylogeography program (BPP, v. 3.1) [58, 59] was used to obtain posterior probabilities on specified nodes. BPP implements a reversible jump Markov chain Monte Carlo (rjMCMC) to search the parameter space that includes  $\theta$  population divergence and gene trees. Analyses were performed with i) mtDNA, ii) nDNA and iii) all markers, to determine the impact of mtDNA polymorphism on species delimitation. Gamma distributions (G) with the following shape and different scale parameters were used to specify the population size,  $\theta_s$ : G(1,10)  $\tau$  G (1,10),  $\theta_s$

$G(1,10) \tau_0 G(1, 2000)$ ,  $\theta_s G(1, 2000) \tau_0 G(1,10)$ ,  $\theta_s G(1, 2000) \tau_0 G(1, 2000)$ . The MCMC chain was run for 400,000 steps (following a burnin of 20,000 steps), sampled every 20 steps. Each analysis was run three times to confirm consistency between runs.

Two additional approaches of species delimitation analysis suitable for single locus data (only mtDNA) were also tested. The Poisson Tree Processes model (PTP) [60] uses non-ultrametric phylogenetic trees and directly incorporates the number of nucleotide substitution in the model of speciation using a Poisson distribution to describe the probability that a substitution gives rise to a speciation event. This method delimits species under the assumption that the number of substitutions between species is considerably higher than within species. The branch lengths of the input tree are supposed to be generated by two independent classes of Poisson events, one corresponding to speciation and the other to coalescence. A bPTP analysis (a recent version of the PTP that implements Bayesian support values to the delimited species) was conducted on the bPTP web server (<http://species.h-its.org/ptp/>). A phylogenetic tree inferred by IQ-Tree [61] was used as input. The chain was run for 150,000 MCMC generations, 10% of samples were discarded as burn-in and sampling interval was 100.

Finally GMYC [62, 63], based on time-calibrated ultrametric phylogenetic trees and using differences in branching rates to infer species was applied. The input tree was generated in BEAST v1.8.2. [48] and the specifications were the same as the ones described above for the \*BEAST analysis (8 partitions, models, strict clock, time-calibration and tree prior/yule process). Independent MCMC runs of 76 million steps were sampled every 10,000 steps (10% of samples were removed as burn-in). The GMYC analysis was conducted using this consensus tree and the single-threshold method within the SPLITS package [64] on R v 3.3.2 [65].

## Results

### Mitochondrial DNA

A total of 3110 bp of mtDNA sequence was obtained (12S rRNA 392 bp, control region 497 bp, ND1 85 bp, ND2 510 bp, cyt b 929 bp (two fragments), tRNAs 256 bp, 16S rRNA 431 bp). Sequences have been deposited in GenBank (for accession numbers see Additional file 3). The concatenated sequence contained 646 polymorphic sites, giving rise to 37 different haplotypes, which differed by a mean pairwise difference of 216.09 ( $\pm 92.03$ ). Indices of mtDNA diversity (Table 2; analyses without 16S rRNA sequences) were higher in *P. tiliguerta* than corresponding values for related species [29, 31], while non-significant neutrality tests [66–69] supported neutral evolution.

### Nuclear data

The nuclear loci analysed were: *MC1R* (720 bp), *RAG1* (939 bp), *APOBE28* (489 bp), *BLC9L* (627–636 bp), *KIAA2018* (644–659 bp) and *KIF24* (497–518 bp). Sequences have been deposited in GenBank (Additional file 3). Basic genetic diversity indices and neutrality statistical tests [66, 69] are indicated in Table 3. The phi test [38] showed no statistically significant evidence for recombination in any gene: *MC1R* ( $p = 0.164$ ), *APOBE28* ( $p = 0.369$ ), *KIAA2018* ( $p = 0.095$ ), *BLC9L* ( $p = 0.467$ ), *KIF24* ( $p = 0.322$ ), *RAG1* ( $p = 0.193$ ).

Length polymorphisms were detected in three nuclear genes, including STRs (short tandem repeats) and INDELs (insertion-deletions). We briefly describe them here. The *KIAA2018* sequence contained a polymorphic microsatellite with a proline repeat (CCT) ranging from 4–9. The (CCT)<sub>7</sub> repeat was the most frequent (see Additional file 4). Only three individuals showed an amino acid change within this repeat. These were: i) two Sardinian samples TSA8 (CTT) and TSA18 (CYT) showed a leucine substitution in the fifth repeat, and ii) the Corsica sample TCO9 showed eight repeats with a threonine substitution in the final repeat. An STR was also observed within the *BLC9L* sequence with a variable number of repeats for glutamine and proline. The common structure was (Gln)<sub>3–4</sub> (Pro)<sub>5–7</sub> (Glu)<sub>5</sub> with the unique exception of a Corsican sample (TCO2) that showed an histidine: (Gln)<sub>4</sub> (Pro)<sub>5</sub> (His) (Gln)<sub>5</sub>. Three different INDELs were detected in *KIF24* sequences: i) a 9 bp deletion (CATTTTGGT) in specimen TSA5 and ii) a 12 bp insertion (AAGGACTTTGGG) in TSA1–3, TSA5, TSA13 and Tf1–2, iii) 6 bp deletions (GAAAGC) in TCO6 and TCO10; and (AGAAAG) in TCO9. Note that i) and ii) occurred only in Sardinia, while iii) occurred only in Corsica.

### Genetic structure of the insular populations

The mtDNA variance was partitioned as 51.01% (i.e.,  $F_{ST} = 0.51$ ) between Corsica and Sardinia (and offshore islands) and the remaining variance within these regions (AMOVA analysis). BAPS analysis of the mtDNA locus defined five genetic clusters ( $\ln L = -8303.607$ ) (Fig. 2a). The analysis distinguishes three Corsican groups: i) cluster A includes lizards from the south-western region (TCO2–4), ii) cluster B includes lizards from the south-east (TCO1, 12–14, 17, 20–21) and iii) cluster C includes lizards from the north of Corsica (TCO5–11, 18–19). Two Sardinian clusters are identified: cluster D includes specimens corresponding to localities in the south of the island (TSA12–13, 15, 18–20) and cluster E contains *P. tiliguerta* from Sardinian islands and islets (Molara Island, Foradada Island, Paduleddi Islet and Stramanari Islet) and from the north of the main island (TSA1–5, 10–11, 17).

**Table 2** Diversity estimates for the concatenated mtDNA fragment in *P. tiliguerta* (without 16S rRNA sequences) compared with others species of the Western Islands Group (*P. lilfordi*, *P. pityusensis* and *P. filfolensis*). Parameters for Corsica and Sardinia *P. tiliguerta* were also estimated independently

Species	N°	V	N° hap	Nucleotide diversity	K	Fu's Fs (1997)	Fu and Li's D (1993) [67]	Fu and Li's F (1993) [67]	Fay and Wu's H (2000) [68]	Tajima's D (1989) [69]
<i>P. lilfordi</i> <sup>a</sup> (2382 bp)	117	189	62	0.019 ± 0.005	45.067	-1.129 <sup>ns</sup>	0.652 <sup>ns</sup>	0.860 <sup>ns</sup>	-17.572 <sup>ns</sup>	0.770 <sup>ns</sup>
<i>P. pityusensis</i> <sup>b</sup> (2430 bp)	73	90	60	0.004 ± 0.001	9.083	-56.983***	-2.432**	-2.589**	-25.341**	-1.745*
<i>P. filfolensis</i> <sup>c</sup> (2533 bp)	31	41	20	0.004 ± 0.001	9.355	-4.097*	-0.681 <sup>ns</sup>	-0.668 <sup>ns</sup>	-12.409**	-0.325 <sup>ns</sup>
<i>P. tiliguerta</i> (2681 bp)	41	595	37	0.074 ± 0.003	197.126	0.840 <sup>ns</sup>	1.419 <sup>ns</sup>	1.425 <sup>ns</sup>	-12.209 <sup>ns</sup>	0.792 <sup>ns</sup>
Corsica	19	394	19	0.046 ± 0.006	122.07	-1.030 <sup>ns</sup>	0.858 <sup>ns</sup>	0.671 <sup>ns</sup>	-77.263 <sup>ns</sup>	-0.043 <sup>ns</sup>
Sardinia	22	386	18	0.051 ± 0.009	137.36	4.241 <sup>ns</sup>	1.510 <sup>ns</sup>	1.569 <sup>ns</sup>	-52.468 <sup>ns</sup>	0.859 <sup>ns</sup>

N°, number of individuals sampled; V, variable position; N° hap, number of haplotypes; K, average number of pairwise differences;

<sup>ns</sup>not significant; \* $P < 0.1$ ; \*\*  $P < 0.05$ ; \*\*\* $P < 0.001$

<sup>a,b,c</sup>obtained from data in Terrasa et al. 2009 [29]<sup>a</sup>, Rodríguez et al. 2013 [31]<sup>b</sup> and Rodríguez et al. 2014 [30]<sup>c</sup>

AMOVA of the nuclear loci indicated that 18.2% (i.e.,  $F_{ST} = 0.182$ ) of the variance occurred between Corsica and Sardinia (and offshore islands) with most of the variance being within these regions. Only two genetic clusters were defined by a BAPS analysis of concatenated nDNA ( $\ln L = -5640.911$ ). The first included all Corsican individuals, and the second included Sardinian and individuals from small islet populations (Fig. 2b). The TCS analysis indicated that two loci (*APOBE28* and *MC1R*) show star-like parsimony networks, with a main haplotype shared by Corsican and Sardinian samples, and derived haplotypes belonging to both islands (Fig. 3). In contrast, *RAG1* and *BLC9L* show compound star-like networks consisting of two central haplotypes, corresponding to Corsica and Sardinia, separated by one mutational step. Finally, the two other networks

(*KIF24* and *KIAA2018*) exhibit a clear separation between Corsican and Sardinian samples, together with a much higher differentiation between haplotypes (30 mutational steps). The *KIAA2018* sequences show greatest diversity of all nuclear loci analysed, characterised by 66 different haplotypes.

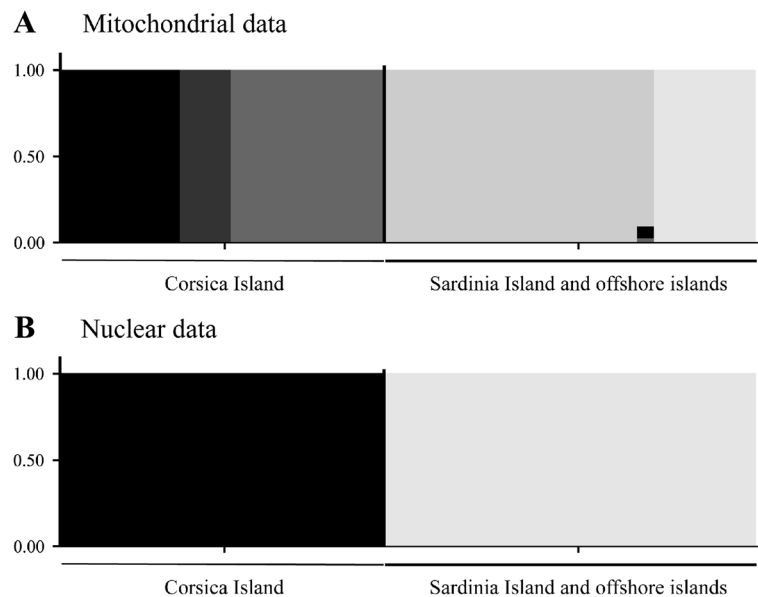
Mitochondrial haplotypes from Sardinia were assigned by BPEC to three phylogeographic clusters with high posterior probabilities ( $>0.7$ ) (Fig. 4a), with most likely ancestral locations being Gallura, Villasimius and Costa rei (see Fig. 1 and Table 1). Three clusters were also obtained for Corsica (Fig. 4a) with likely ancestral locations being Sant Bastiano, Corte and Vivario (see Fig. 1 and Table 1). Low posterior cluster assignment probabilities were obtained for eight Corsican haplotypes ( $\sim 0.4$ – $0.5$ ), and one Sardinian ( $\sim 0.5$ ) haplotype. Geographical

**Table 3** Diversity estimates for six nuclear exons in *P. tiliguerta* (length polymorphisms are included in these analyses)

Exon gene	Length (bp)	N° ind.	V	N° hap	Nucleotide diversity	K	Fu's Fs (1997) [66]	Tajima D (1989) [69]
<i>MC1R</i>	720	39	47	56	0.006 ± 0.0003	4.076	-0.133 <sup>ns</sup>	-0.064 <sup>ns</sup>
<i>RAG1</i>	939	38	70	52	0.015 ± 0.0004	6.045	-0.424 <sup>ns</sup>	-0.086 <sup>ns</sup>
<i>APOBE28</i>	489	37	47	41	0.006 ± 0.0006	2.961	-0.367 <sup>ns</sup>	-0.055 <sup>ns</sup>
<i>BLC9L</i>	636	38	67	56	0.009 ± 0.0006	5.544	-0.139 <sup>ns</sup>	-0.052 <sup>ns</sup>
<i>KIAA2018</i>	659	39	71	66	0.020 ± 0.0006	13.000	-0.262 <sup>ns</sup>	-0.039 <sup>ns</sup>
<i>KIF24</i>	518	34	75	55	0.021 ± 0.0008	10.449	-0.491 <sup>ns</sup>	-0.078 <sup>ns</sup>
Concatenated								
Corsica (n = 38)	3961		225	38	0.010 ± 0.006	37.516	0.288 <sup>ns</sup>	-0.083 <sup>ns</sup>
Sardinia (n = 40)	3961		244	39	0.010 ± 0.003	38.063	0.353 <sup>ns</sup>	-0.076 <sup>ns</sup>
<i>P. tiliguerta</i> (n = 78)	3961		377	77	0.011 ± 0.002	41.985	0.360 <sup>ns</sup>	-0.061 <sup>ns</sup>

N°, number of individuals; V, number of variable position; N° hap, number of haplotypes; K, average number of pairwise differences;

n, number of sequences resulted of phased data, <sup>ns</sup> not significant



**Fig. 2** Overall genetic structure inferred from **a**) mtDNA and **b**) concatenated nuclear loci across the two main geographic regions used in this study. Mixture analyses were estimated by BAPS software. In the bar plot, vertical bars represent individuals and proportions of admixture, with colours corresponding to ancestral sources

structuring in Corsica corresponded to the north, south-east and south-west of the island, while in Sardinia three geographical groupings were detected: i) north (with some offshore islands), ii) south and iii) Foradada Island (Fig. 4a). BPEC analyses of nuclear loci assigned haplotypes to four phylogeographic clusters with generally high posterior probabilities: two of them, in Corsica and two, in Sardinia (Fig. 4b). However all nuclear genes divide the main islands into northern and southern regions.

#### Species phylogeny, divergence times and species delimitation

Preliminary gene tree analyses were performed on all individual loci prior to the Bayesian multispecies coalescent analysis. These analyses ruled out the possibility that *P. tiliguerta* was polyphyletic relative to the other closely related taxa that were included (*P. hipanica*, *P. guadarramae*, *P. virescens*, *P. liolepis*, *P. lilfordi*, *P. pityusensis*, and *P. filfolensis*) (data not shown).

The species tree (Fig. 5), based on mtDNA, provided a posterior mean for the divergence of *P. tiliguerta* from (*P. lilfordi*, *P. pityusensis*) at 13.87 Ma (95% highest posterior density, HPD: 18.30–10.77 Ma), and that for the divergence of Corsica and Sardinia lineages, at 12.75 Ma (95% HPD: 16.94–9.04).

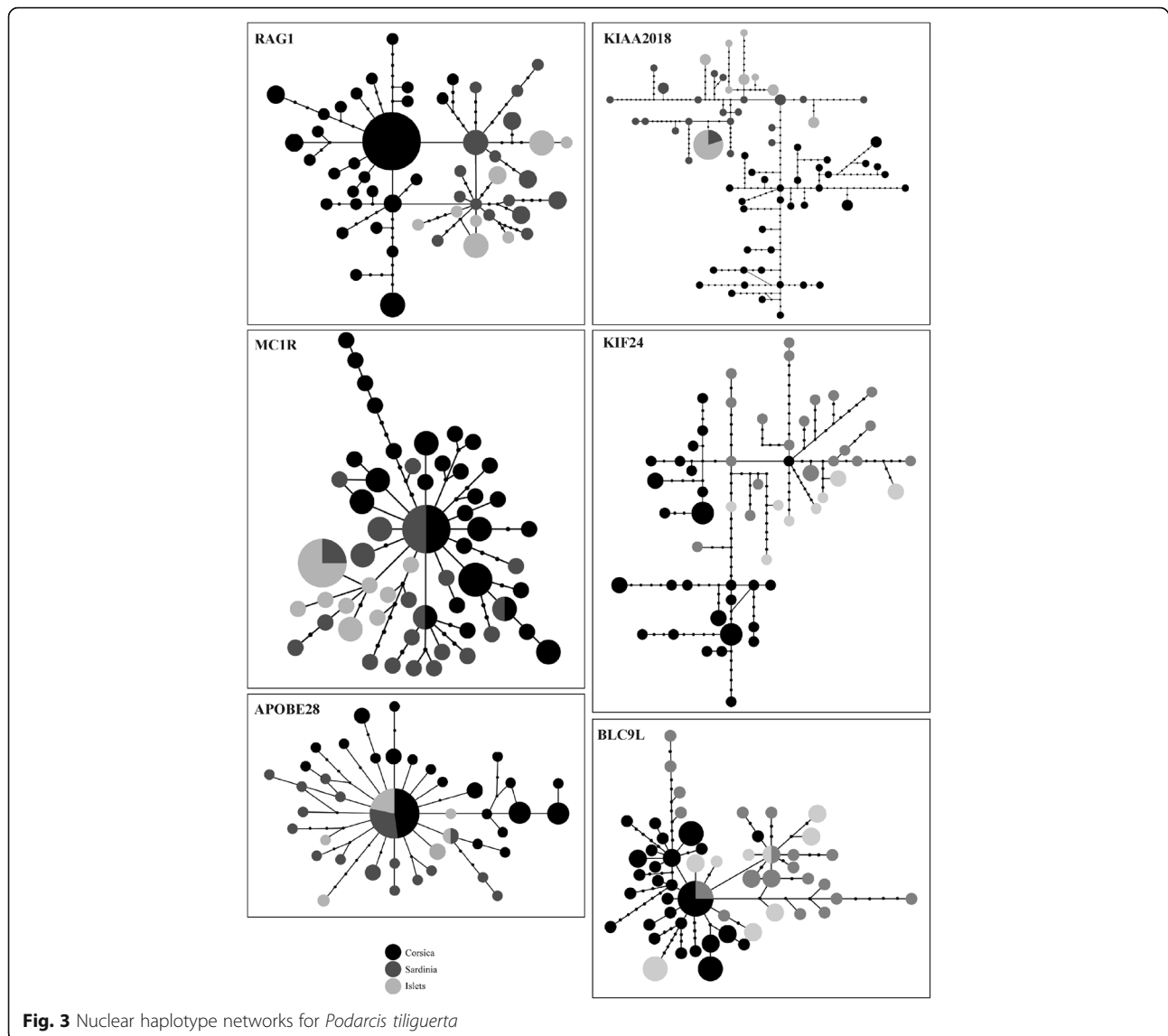
All BPP analyses supported the two species (Corsica, Sardinia) model ( $P = 1.00$ ) irrespective of the prior specifications for  $\theta_s$  and  $\tau_0$  and whether mtDNA was included or excluded from the analyses.

The trees obtained from the bPTP analysis (PTP\_ML and PTP-sh) (excluding outgroups) showed 11 groups with high posterior probabilities ( $\geq 0.91$ ). Of the 11 clusters, 8 comprised only 1 sample. The GMYC approach detected 9 clusters within *P. tiliguerta* with a total of 19 entities, excluding outgroups and with posterior probabilities  $\geq 0.85$ . The different clusters detected by these two analyses corresponded to different clades detected within Corsica and Sardinian islands, but none of these groups comprised both Corsica and Sardinian individuals, further supporting species delimitation of these two island forms. Additional information about PTP and GMYC analyses is available on request.

#### Discussion

The most striking finding is the high degree of genetic variability detected within the taxon *Podarcis tiliguerta*. This has already been suggested by two previous studies that analysed protein mobility and mtDNA [22, 24]. Other insular Mediterranean species, such as *P. pityusensis*, *P. lilfordi* or *P. filfolensis* show lower levels of divergence, although they inhabit smaller islands. For example, the mean pairwise differences for comparable mtDNA regions is more than four times higher than in *P. lilfordi*, and is almost 22 times greater than in *P. filfolensis* or *P. pityusensis*. In addition, intraspecific nDNA variability also appears to be greater *P. tiliguerta* than in other *Podarcis* which confirms the extreme genetic diversity observed within this species [24, 70].



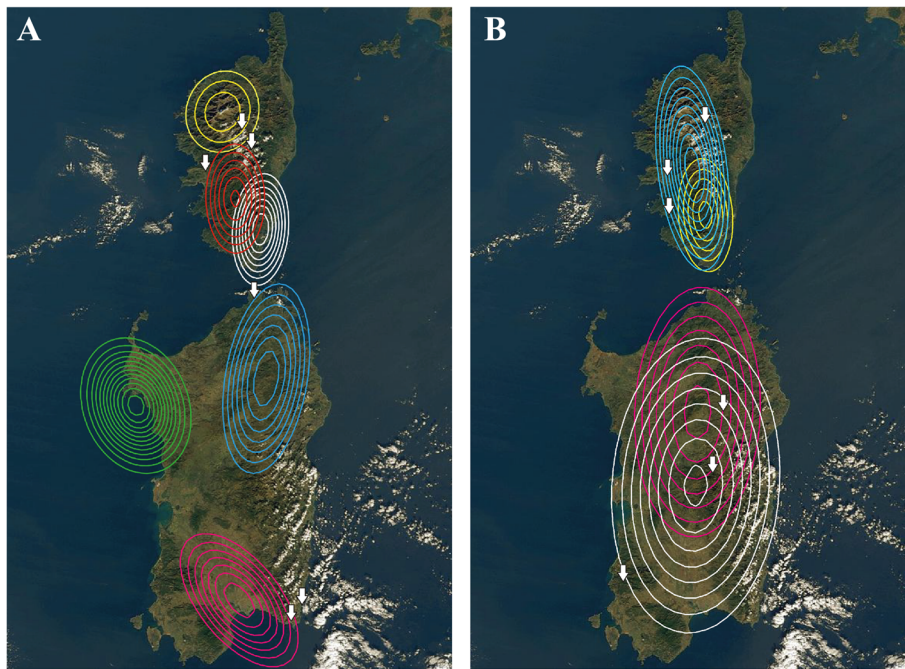


The high diversity is primarily accounted for by strong geographical structuring with a deep, ancient divergence between Corsican and Sardinian lineages as well as substantial within-island divergence. Early analyses of allozymes and short mtDNA fragments indicated two genetic groupings: Corsica and Sardinia [22, 24]. Subsequent analyses, with wider sampling, revealed three mtDNA groups: two in Sardinia and one in Corsica [25, 70]. Here, we detect three geographically-structured mtDNA groups within Corsica, corresponding to the north, south-east and south-west of the island. We also detect two/three (depending on the analysis) spatial groupings of mtDNA within Sardinia: one of which corresponds to the north of the main island and associated smaller islands, while the other corresponds to the south.

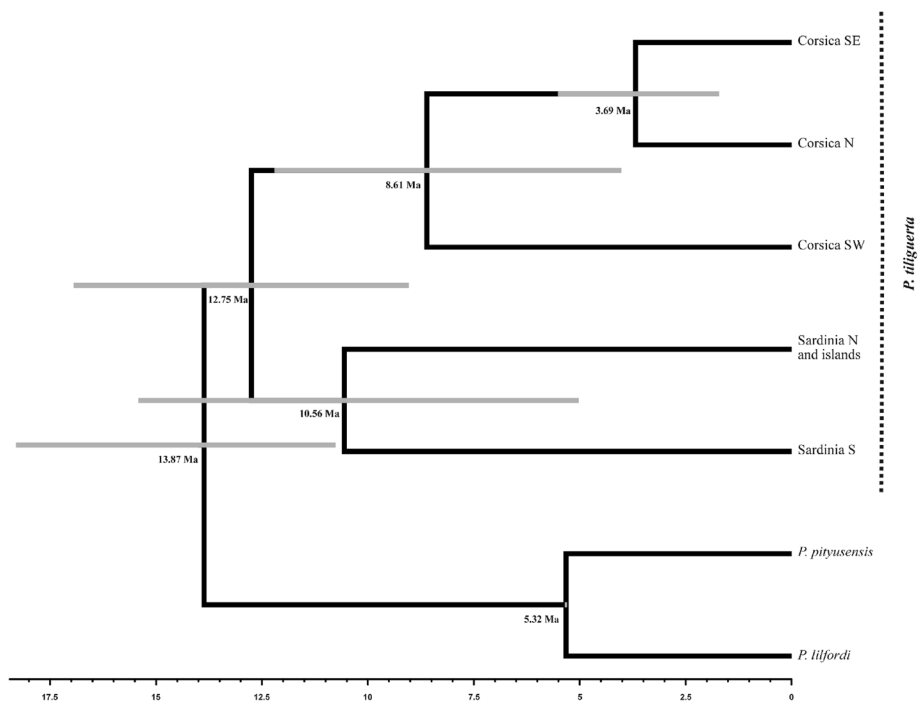
As expected, the nuclear data detected fewer clusters. The BAPS analyses revealed two groups: Corsica and

Sardinia, while the slightly more sensitive BPEC analyses revealed two additional clusters within each island. Bruschi et al. [20] studied *P. tiliguerta* using morphological characters and suggested hybridization was occurring in southern Corsican populations due to introductions of individuals from Sardinia which might contribute to these patterns. However, our nuclear and mtDNA analyses found no evidence of this. Although some nuclear alleles were shared between Corsican and Sardinian populations, the lack of any such patterns in the mtDNA suggests that incomplete lineage sorting is the most likely cause.

The ancestral species node for *P. tiliguerta* was dated at 12.75 Ma (Fig. 5; 95% HPD: 16.94–9.04 Ma) confirming preliminary divergence time estimates (13 Ma) [71]. *P. pityusensis* and *P. lilfordi* are related species to *P. tiliguerta*, including all them in the



**Fig. 4** Analyses of Bayesian phylogeographical and ecological clustering (BPEC): **a**) using mtDNA or **b**) RAG1 as example of nuclear DNA. Each coloured contour plot indicates a different phylogeographical clusters. The contour plots are centred at the 'centre' of each population cluster, and the coloured regions show the radius of 50% concentration contours around it. *White arrows* show the ancestral locations with the highest posterior probability for each island



**Fig. 5** Mitochondrial populations tree chronogram estimated by \*BEAST in *P. tiliguerta*. *P. lillfordi* and *P. pityusensis* are used as outgroups. Grey bars correspond to the 95% highest posterior density intervals for each divergence time

named “Western Islands group” [72]. This clearly predates the intraspecific divergence within: i) *P. lilfordi* which dates to the early Pleistocene [53], ii) *P. filfolensis* which also diverged in the Pleistocene [30] and iii) *P. pityusensis* which diverged in the mid-late Pleistocene [31]. The divergence time between Corsica and Sardinia far exceeds the usual limits for distinct species within the Squamata [73, 74]. Reciprocal monophyly between the islands was found for several loci, which supports our detection of species delimitation (although not for all loci, as would be expected between distinct species). This, and the general concordance with and among nuclear markers, explains why our species delimitation analysis provides such strong support for separation of *P. tiliguerta* into two species. In a future study we intend to provide formal (morphological and ecological) descriptions of these new taxa.

*P. tiliguerta* appears to have originated by allopatric speciation, from continental ancestors that colonized the Corsica-Sardinia microplate. According to Arnold et al. [52], the Lacertini spread and diversified around 16–12 Ma BP producing the ancestors of the present genera, so genus origin postdates the isolation of the Corsica-Sardinia microplate from the Iberian plate (29 Ma). This indicates that the ancestors reached it subsequently via the land bridge that it maintained with the continent during its rotation. Later, the microplate split into two islands (15–9 Ma ago [7, 8]) leading to isolation of the Sardinian and Corsican lineages, concordant with our divergence time estimate. Since separation, the heterogeneous orography of Corsica and Sardinia could have played an important role in determining intraspecific diversity.

## Conclusions

In summary, we analysed mtDNA and nuclear markers in *P. tiliguerta* and found high genetic variability and a deep genetic structure, corresponding to deep Miocene divergence between Corsica and Sardinia. In addition, we detected substantial within-island divergence but were unable to relate it to any geological or other events in the islands past. This study will motivate and contribute evidence to a taxonomic reassessment of *P. tiliguerta* with respect to the Corsican and Sardinian forms.

## Additional files

**Additional file 1:** Primers sequences used in amplification and sequencing. (DOCX 17 kb)

**Additional file 2:** *Podarcis spp* analysed as outgroup in \*BEAST analyses. (DOCX 11 kb)

**Additional file 3:** Sample accession numbers for mitochondrial and nuclear gene. (DOCX 24 kb)

**Additional file 4:** STRs observed in *KIAA2018* gene (664 bp) included a proline repeat (CCT motif). The number of repeats ranged 4 to 9 (12 bp to 27 bp). (DOCX 12 kb)

## Abbreviations

AICc: Akaike information criterion corrected; AMOVA: Analysis of Molecular Variance; *APOB28*: Apolipoprotein B gene exon 28; BAPS: Bayesian Analysis of Population Structure; BEAST: Bayesian Evolutionary Analysis by Sampling Trees; *BLC9L*: Lipoprotein gene; BPEC: Bayesian Phylogeographical and Ecological Clustering; BPP: Bayesian Phylogenetics and Phylogeography; CR: Control Region; *cytb*: Cytochrome b; G: Gamma distribution; HPD: Highest Posterior Density; INDEL: Insertion-deletion; *KIAA2018*: Transcription factor gene; *KIF24*: Kinesin Family Member 24; LGM: Last Glacial Maximum; *MCTR*: Melanocortin-1 Receptor; MCMC: Markov Chain Monte Carlo; MRCA: Most Recent Common Ancestor; MSC: Messinian Salinity Crisis; mtDNA: mitochondrial DNA; *ND*: Nicotine adenine dinucleotide gene; nDNA: Nuclear DNA; phi: Pairwise Homoplasy Index; *RAG1*: Recombination-Activating Gene 1; rjMCMC: reversible jump Markov chain Monte Carlo; rRNA: Ribosomal RNA; STR: Short Tandem Repeat; tRNA: transfer RNA

## Acknowledgements

Our acknowledgement to CERFA for the license for field work in May 2011 (permit No. 13616\*01) and the Ministerio dell'Ambiente e della Tutela del Territorio e del Mare, that authorized sampling of lizards in Sardinia (authorization DPN-2010-0017564). We thank M. Bassitta and C. Colom for 16S rRNA amplification and sequencing.

## Funding

This work was financed by the research grant CGL2015-68139-C2-1-P of the Ministerio Español de Economía y Competitividad and European Regional Development Fund (ERDF). VR (FPI/2009) and JMB (FPI/1488/2012) were funded by fellowships (FPI/1488/2012) from the Conselleria d'Educació, Cultura i Universitats (Govern de les Illes Balears), co-financed by the European Social Fund.

## Availability of data and materials

DNA sequences: GenBank Accessions numbers of the mtDNA (KM058760–KM058886) and from the nDNA (KX237247–KX237504, JX126691–93).

## Authors' contributions

CR, JAC and AP conceived and designed the experiments; VPM, MD and CC sampled; Performed the experiments and analysed the data: VR, JMB and RPB performed the experiments and analysed the data; VPM and BT contributed with reagents/materials/analysis tools; Wrote the paper: VR, JMB, RPB and CR. All authors read and approved the final manuscript.

## Competing interests

The authors declare that they have no competing interests.

## Consent for publication

Not applicable.

## Ethics approval

Animal Care and Use Committee approval was not applicable for this study.

## Author details

<sup>1</sup>Laboratori de Genètica, Universitat de les Illes Balears, Palma de Mallorca, Spain. <sup>2</sup>School of Natural Sciences & Psychology, Liverpool John Moores University, Liverpool, UK. <sup>3</sup>Departamento de Zoología, Universidad de Salamanca, Salamanca, Spain. <sup>4</sup>Museo di Storia Naturale de l'Università di Firenze, Sezione di Zoologia “La Specola”, Firenze, Italy. <sup>5</sup>Conservatoire du Littoral, Bastia, France.

Received: 29 November 2016 Accepted: 21 December 2016

Published online: 19 January 2017

## References

- Rosenzweig ML. Species diversity in space and time. Cambridge: University Press; 1995
- Myers N, Mittermeier RA, Mittermeier CG, da Fonseca GAB, Kent J. Biodiversity hotspots for conservation priorities. *Nature*. 2000;403(6772):853–8.
- Fernández-Palacios JM. Why islands. *Islands Evolution*. 2010;85–109.

4. Verlaque R, Médail F, Quézel P, Babinot J-F. Endémisme végétal et paléogéographie dans le bassin méditerranéen. *Geobios*. 1997;30:159–66.
5. Médail F, Quézel P. Biodiversity Hotspots in the Mediterranean Basin: Setting Global Conservation Priorities. *Conserv Biol*. 1999;13(6):1510–3.
6. Meulenkamp JE, Sissingh W. Tertiary palaeogeography and tectonostratigraphic evolution of the Northern and Southern Peri-Tethys platforms and the intermediate domains of the African–Eurasian convergent plate boundary zone. *Palaeogeog Palaeoclim Palaeoecol*. 2003;196(1):209–28.
7. Alvarez W. Rotation of the Corsica–Sardinia microplate. *Nature*. 1972;235(58):103–5.
8. Alvarez W. Fragmentation of the Alpine orogenic belt by microplate dispersal. *Nature*. 1974;248:309–14.
9. Krijgsman W, Hilgen F, Raffi I, Sierro F, Wilson D. Chronology, causes and progression of the Messinian salinity crisis. *Nature*. 1999;400(6745):652–5.
10. Duggen S, Hoernle K, Van Den Bogaard P, Rüpke L, Morgan JP. Deep roots of the Messinian salinity crisis. *Nature*. 2003;422(6932):602–6.
11. Grill A, Casula P, Lecis R, Menken S. Endemism in Sardinia. In: *Phylogeography of southern European refugia*. Netherlands: Springer; 2007. p. 273–96.
12. Lanza B. The natural history of the Cerbicale islands (south-eastern Corsica) with particular reference to their herpetofauna. (Storia naturale delle Isole Cerbicale (Corsica sudorientale) con particolare riferimento alla loro erpetofauna). *Natura*. 1972;63(4):345–407.
13. Lanza B, Brizzi R. On two new Corsican microinsular subspecies of *Podarcis tiliguerta* (Gmelin, 1789)(Reptilia: Lacertidae). *Natura*. 1974;65(3-4):155–93.
14. Lanza B, Poggesi M. Storia naturale delle isole satelliti della Corsica. Firenze: Istituto geografico militare; 1986.
15. Arnold EN, Ovenden D. Reptiles and amphibians of Europe, vol. 288. Princeton: University Press Princeton; 2002.
16. Brizzi R, Lanza B. The natural history of the Macinaggio Islets (northeastern Corsica) with particular reference to their herpetofauna. *Natura*. 1975;66(1-2):53–72.
17. Lanza B. On a new wall lizard from Corsica, with notes on the Sanguinarie Islands (Reptilia: Lacertidae). *Natura*. 1976;67(3-4):185–202.
18. Lanza B, Corti C. Evolution of the knowledge on the Italian herpetofauna during the 20th century. *Bollettino del Museo Civico di Storia Naturale di Verona*. 1996;20(1993):373–436.
19. Corti C, Cascio PL. The lizards of Italy and adjacent Areas. In: *Frankfurter Beiträge zur Naturkunde*, Vol. 14: Edition. Frankfurt: Chimaira; 2002.
20. Bruschi S, Corti C, Carretero M, Harris D, Lanza B, Leviton A. Comments on the status of the Sardinian–Corsican Lacertid lizard *Podarcis tiliguerta*. *Proc Calif Acad Sci*. 2006;57(1/11):225.
21. Bruschi S, Corti C, M. C. *Podarcis tiliguerta* (Gmelin, 1789). In: *Fauna d'Italia Reptilia*. Edited by Corti C, Capula M, Luiselli L, Razzetti E, Sindaco R. Bologna: Edizioni Calderini de Il Sole 24 Ore Editoria Specializzata S.r.l.; 2010.
22. Capula M. Evolutionary genetics of the insular lacertid lizard *Podarcis tiliguerta*: genetic structure and population heterogeneity in a geographically fragmented species. *Heredity* (Edinb). 1996;77(5):518–29.
23. Pinho C, Corti C, Carretero M, Harris DJ. Genetic variability within *Podarcis tiliguerta*: preliminary evidence from 12S rRNA gene sequences. In: *Fifth International Symposium on the Lacertids of the Mediterranean Basin*, Lipari, Aeolian Islands, Sicily, Italy. 2004. p. 7–11.
24. Harris D, Pinho C, Carretero M, Corti C, Böhme W. Determination of genetic diversity within the insular lizard *Podarcis tiliguerta* using mtDNA sequence data, with a reassessment of the phylogeny of *Podarcis*. *Amphibia-Reptilia*. 2005;26(3):401–7.
25. Podnar M, Mayer W. Can mitochondrial DNA draw the phylogenetic picture of Central Mediterranean island *Podarcis*? *Herpetozoa*. 2005;18(1/2):73–7.
26. Pinho C, Ferrand N, Harris DJ. Reexamination of the Iberian and North African *Podarcis* (Squamata: Lacertidae) phylogeny based on increased mitochondrial DNA sequencing. *Mol Phylogenet Evol*. 2006;38(1):266–73.
27. Poulakakis N, Lymberakis P, Antoniou A, Chalkia D, Zouros E, Mylonas M, Valakos E. Molecular phylogeny and biogeography of the wall-lizard *Podarcis erhardii* (Squamata: Lacertidae). *Mol Phylogenet Evol*. 2003;28(1):38–46.
28. Sambrook J, Fritsch E, Maniatis T. *Molecular Cloning: A Laboratory Manual*. 2nd ed. Cold Spring Harbor: Cold Spring Harbor Laboratory Press; 1989.
29. Terrasa B, Pérez-Mellado V, Brown RP, Picornell A, Castro JA, Ramon MM. Foundations for conservation of intraspecific genetic diversity revealed by analysis of phylogeographical structure in the endangered endemic lizard *Podarcis lilfordi*. *Diversity Distrib*. 2009;15(2):207–21.
30. Rodríguez V, Brown R, Terrasa B, Pérez-Mellado V, Picornell A, Castro J, Ramon C. Genetic diversity and historical biogeography of the Maltese wall lizard, *Podarcis filfolensis* (Squamata: Lacertidae). *Conserv Genet*. 2014;15(2):295–304.
31. Rodríguez V, Brown RP, Terrasa B, Perez-Mellado V, Castro JA, Picornell A, Ramon MM. Multilocus genetic diversity and historical biogeography of the endemic wall lizard from Ibiza and Formentera, *Podarcis pityusensis* (Squamata: Lacertidae). *Mol Ecol*. 2013;22(19):4829–41.
32. Carranza S, Arnold EN, Thomas RH, Mateo J, López-Jurado L. Status of the extinct giant lacertid lizard *Gallotia simonyi simonyi* (Reptilia: Lacertidae) assessed using mtDNA sequences from museum specimens. *Herpetol J*. 1999;9(2):83–6.
33. Buades JM, Rodríguez V, Terrasa B, Perez-Mellado V, Brown RP, Castro JA, Picornell A, Ramon MM. Variability of the *mc1r* Gene in Melanic and Non-Melanic *Podarcis lilfordi* and *Podarcis pityusensis* from the Balearic Archipelago. *PLoS One*. 2013;8(1):e53088.
34. Mayer W, Pavlicev M. The phylogeny of the family Lacertidae (Reptilia) based on nuclear DNA sequences: Convergent adaptations to arid habitats within the subfamily Eremiinae. *Mol Phylogenet Evol*. 2007;44(3):1155–63.
35. Portik D, Wood P, Grismer J, Stanley E, Jackman T. Identification of 104 rapidly-evolving nuclear protein-coding markers for amplification across scaled reptiles using genomic resources. *Conserv Genet Resour*. 2012;4(1):1–10.
36. Hall TA. BioEdit: a user-friendly biological sequence alignment editor and analysis program for Windows 95/98/NT. *Nucleic Acids Symp Ser*. 1999;41:95–8.
37. Librado P, Rozas J. DnaSP v5: a software for comprehensive analysis of DNA polymorphism data. *Bioinformatics*. 2009;25(11):1451–2.
38. Bruen TC, Philippe H, Bryant D. A simple and robust statistical test for detecting the presence of recombination. *Genetics*. 2006;172(4):2665–81.
39. Huson DH, Bryant D. Application of phylogenetic networks in evolutionary studies. *Mol Biol Evol*. 2006;23(2):254–67.
40. Clement M, Posada D, Crandall KA. TCS: a computer program to estimate gene genealogies. *Mol Ecol*. 2000;9(10):1657–9.
41. Excoffier L, Laval G, Schneider S. Arlequin (version 3.0): An integrated software package for population genetics data analysis. *Evol Bioinform Online*. 2005;1:47–50.
42. Manolopoulou I, Emerson BC. Phylogeographic ancestral inference using the coalescent model on haplotype trees. *J Comput Biol*. 2012;19(6):745–55.
43. Manolopoulou I, Legarreta L, Emerson BC, Brooks S, Tavaré S. A Bayesian approach to phylogeographic clustering. *Interface Focus*. 2011;1(6):909–21.
44. Xia X, Lemey P. Assessing substitution saturation with DAMBE. In: *The Phylogenetic Handbook: A Practical Approach to DNA and Protein Phylogeny*. Edited by: Lemey P, Salemi M, Vandamme A-M. Cambridge: University Press; 2009. p. 615–30.
45. Xia X, Xie Z, Salemi M, Chen L, Wang Y. An index of substitution saturation and its application. *Mol Phylogenet Evol*. 2003;26(1):1–7.
46. Corander J, Waldmann P, Sillanpää MJ. Bayesian analysis of genetic differentiation between populations. *Genetics*. 2003;163(1):367–74.
47. Heled J, Drummond AJ. Bayesian Inference of Species Trees from Multilocus Data. *Mol Biol Evol*. 2010;27(3):570–80.
48. Drummond AJ, Suchard MA, Xie D, Rambaut A. Bayesian phylogenetics with BEAUti and the BEAST 1.7. *Mol Biol Evol*. 2012;29(8):1969–73.
49. Heled J, Drummond AJ. Calibrated Tree Priors for Relaxed Phylogenetics and Divergence Time Estimation. *Syst Biol*. 2012;61(1):138–49.
50. Brown RP, Yang Z. Bayesian Dating of Shallow Phylogenies with a Relaxed Clock. *Syst Biol*. 2010;59(2):119–31.
51. Posada D. jModelTest: phylogenetic model averaging. *Mol Biol Evol*. 2008;25(7):1253–6.
52. Arnold EN, Arribas O, Carranza S. Systematics of the Palearctic and Oriental lizard tribe Lacertini (Squamata: Lacertidae: Lacertinae), with descriptions of eight new genera. *Zootaxa*. 2007;1430:1–86.
53. Brown RP, Terrasa B, Perez-Mellado V, Castro JA, Hoskisson PA, Picornell A, Ramon MM. Bayesian estimation of post-Messinian divergence times in Balearic Island lizards. *Mol Phylogenet Evol*. 2008;48(1):350–8.
54. Pierre C, Caruso A, Blanc-Valleron M-M, Rouchy JM, Orszag-Sperber F. Reconstruction of the paleoenvironmental changes around the Miocene–Pliocene boundary along a West–East transect across the Mediterranean. *Sediment Geol*. 2006;188:319–40.
55. Martínez-Solano I, Gonçalves H, Arntzen J, García-París M. Phylogenetic relationships and biogeography of midwife toads (*Discoglossidae: Alytes*). *J Biogeogr*. 2004;31(4):603–18.
56. Brown RP, Yang Z. Rate variation and estimation of divergence times using strict and relaxed clocks. *BMC Evol Biol*. 2011;11(1):1.

57. Rambaut A, Drummond A. Tracer 1.5. Edinburgh: University of Edinburgh. Available at: <http://tree.bio.ed.ac.uk/software/tracer> 2007.
58. Yang Z, Rannala B. Bayesian species delimitation using multilocus sequence data. *Proc Natl Acad Sci U S A*. 2010;107(20):9264–9.
59. Rannala B, Yang Z. Improved reversible jump algorithms for Bayesian species delimitation. *Genetics*. 2013;194(1):245–53.
60. Zhang J, Kapli P, Pavlidis P, Stamatakis A. A general species delimitation method with applications to phylogenetic placements. *Bioinformatics*. 2013;29(22):2869–76.
61. Nguyen L-T, Schmidt HA, von Haeseler A, Minh BQ. Iq-tree: A fast and effective stochastic algorithm for estimating maximum-likelihood phylogenies. *Mol Biol Evol*. 2015;32(1):268–74.
62. Pons J, Barraclough TG, Gomez-Zurita J, Cardoso A, Duran DP, Hazell S, Kamoun S, Sumlin WD, Vogler AP. Sequence-based species delimitation for the DNA taxonomy of undescribed insects. *Syst Biol*. 2006;55(4):595–609.
63. Fujisawa T, Barraclough TG. Delimiting species using single-locus data and the Generalized Mixed Yule Coalescent (GMYC) approach: a revised method and evaluation on simulated datasets. *Syst Biol*. 2013;62(5):707–24.
64. Ezard T, Fujisawa T, Barraclough T. SPLITS: species' limits by threshold statistics. R package version. 2009. <http://R-Forge.R-project.org/projects/splits/>.
65. Team RC. R: A language and environment for statistical computing. Vienna: R Foundation for Statistical Computing; 2015. URL <http://www.R-project.org2016>.
66. Fu Y-X. Statistical tests of neutrality of mutations against population growth, hitchhiking and background selection. *Genetics*. 1997;147(2):915–25.
67. Fu Y-X, Li W-H. Statistical tests of neutrality of mutations. *Genetics*. 1993;133(3):693–709.
68. Fay JC, Wu C-I. Hitchhiking under positive Darwinian selection. *Genetics*. 2000;155(3):1405–13.
69. Tajima F. Statistical method for testing the neutral mutation hypothesis by DNA polymorphism. *Genetics*. 1989;123(3):585–95.
70. Vasconcelos R, Harris DJ, Carretero MA, Pinho C, Corti C, Capula M, Bassu L, Spano G, Delauguerre M. Genetic diversity within Corsican and Sardinian specimens of the Tyrrhenian Wall Lizard, *Podarcis tiliguerta*, estimated using mtDNA sequences. In: *Mainland and insular lizards a Mediterranean perspective*. Florence: Firenze University Press; 2006. p. 199–207.
71. Oliverio M, Bologna MA, Monciotti A, Annesi F, Mariottini P. Molecular phylogenetics of the Italian *Podarcis* lizards (Reptilia, Lacertidae). *Ital J Zool*. 1998;65(3):315–24.
72. Harris DJ, Arnold EN. Relationships of Wall Lizards, *Podarcis* (Reptilia: Lacertidae) Based on Mitochondrial DNA Sequences. *Copeia*. 1999;1999(3):749–54.
73. Hasbun CR, Gomez A, Köhler G, Lunt DH. Mitochondrial DNA phylogeography of the Mesoamerican spiny-tailed lizards (*Ctenosaura quinquecarinata* complex): historical biogeography, species status and conservation. *Mol Ecol*. 2005;14(10):3095–107.
74. Pinho C, Harris D, Ferrand N. Contrasting patterns of population subdivision and historical demography in three western Mediterranean lizard species inferred from mitochondrial DNA variation. *Mol Ecol*. 2007;16(6):1191–205.

Submit your next manuscript to BioMed Central and we will help you at every step:

- We accept pre-submission inquiries
- Our selector tool helps you to find the most relevant journal
- We provide round the clock customer support
- Convenient online submission
- Thorough peer review
- Inclusion in PubMed and all major indexing services
- Maximum visibility for your research

Submit your manuscript at  
[www.biomedcentral.com/submit](http://www.biomedcentral.com/submit)

