

Spatial ecology of the Red Kite (*Milvus milvus*) during the breeding period in Spain

Jorge García-Macía*, Javier Vidal-Mateo, Javier de la Puente, Ana Bermejo & Vicente Urios*

J. García-Macía, J. Vidal-Mateo, V. Urios, Grupo de Investigación Zoología de Vertebrados, Universidad de Alicante, Apdo. 99, E-03080 Alicante, Spain

J. de la Puente, A. Bermejo, SEO/BirdLife, Bird Monitoring Unit, C/ Melquiades Biencinto, 34, E-28053, Madrid, Spain

**Corresponding authors' e-mail: jorgegarciamacia97@gmail.com & vicente.urias@yahoo.es*

Received 15 March 2021, accepted 28 October 2022

Studies focusing on the spatial ecology of the Red Kite (*Milvus milvus*) during the breeding season are scarce, despite this season having major importance in its conservation. Spain has one of the largest breeding populations of this species, but it is very threatened in this country. Here, 28 Red Kites were tagged in Spain with GPS satellite transmitters to study the movements of breeding adults during the breeding season (March–June), evaluating the differences according to sex, and investigating the habitat selection. The area used by females was smaller than the used by males (95% KDE = 4.48 vs. 3.30 km²). Females also traveled less distance per hour and remained closer to the nest. Thus, females had a higher frequency of locations at distances <250 m from the nest, while males had a higher frequency at distances >1 km. Distances recorded at >5 km were scarce for both sexes, and maximum distances reached were usually (61% of seasons) less than 15 km. Both sexes increased the frequency of movements between 1–3 km during the central hours of the day. Red Kites mainly used areas occupied by non-irrigated arable land, forests, scrubs, and herbaceous vegetation. The selection of certain types of crops highlights the importance of the agroforestry landscape for the conservation of the species. On the other hand, we documented for the first time how part of the Spanish breeding population is a short-distance migrant within the Iberian Peninsula while other part of the population makes post-breeding movements during summer.



1. Introduction

Understanding spatial ecology during the breeding season is fundamental for the conservation of birds, especially for threatened raptors, such as the

Red Kite in Spain. The breeding strategies, which include incubation, chick-rearing, and fledging, result from a trade-off between current breeding success and parents' future condition (Trivers 1972, Nur 1988, Clutton-Brock 1991, Williams

2018). The knowledge about home range areas and movements performed by raptors during reproduction is essential for the delimitation of protected areas around the nests (Kays *et al.* 2015, López-López *et al.* 2016). Given that the Red Kite breeding population has decreased in Spain in recent years (Molina 2015), the study of its spatial ecology could help to design more effective conservation measures for the species in the Iberian Peninsula.

Despite the importance of this topic, studies concerning the spatial ecology of the Red Kite during the breeding season are scarce. Most of the previous studies on this topic were based on field observations or radio-tracking (Newton *et al.* 1989, Bustamante 1993, Newton *et al.* 1994, Mougeot *et al.* 2011), while the studies using GPS telemetry are uncommon (Mammen *et al.* 2014, Pfeiffer & Meyburg 2015). However, GPS telemetry could provide fundamental information about the behaviour of the species (López-López *et al.* 2010, Urios *et al.* 2015, López-López 2016). Studies based on this tracking technology, combined with direct observations to know the stage of development of chicks, are necessary to understand the breeding ecology of this species and other raptors.

The deeper the knowledge of its breeding ecology, the better conservation tools will be available to protect the species. In some countries, there has been a population increase in recent years (Aebischer 2010, Cereghetta *et al.* 2019, BirdLife International 2019), but the species is still listed as “endangered” in the Spanish List of Threatened Species because their breeding populations have clearly decreased in the last decades (Molina 2015). The main causes of this decline are human persecution (including poisoning and illegal hunting), collisions and electrocutions, car accidents, inter-specific competition, and habitat deterioration (Viñuela *et al.* 1999, Carter 2001, Sergio *et al.* 2005, Berny & Gaillet 2008, Knott *et al.* 2009, Mougeot *et al.* 2011, Mateo-Tomás *et al.* 2020, Viñuela *et al.* 2021).

Here we used 28 individuals tagged with GPS telemetry to study the spatial ecology of Red Kite during the breeding period (including laying, hatching, and fledging; from March to June) in Spain. Our goals were a) to estimate the home range, mean distance to nest, and hourly

travelled distance during the reproductive season; b) to evaluate the differences in spatial ecology according to sex; c) to study the habitat selection during the breeding season; and d) to analyze the diversity of post-reproductive strategies (sedentarism, sedentarism with post-reproductive movements, or intra-peninsular migration) used by the Spanish breeding population of the Red Kites.

2. Materials and methods

2.1. Study species

The Red Kite (*Milvus milvus*) is a medium-sized opportunistic raptor from western Palearctic (Cramps & Simmons 1980, IUCN 2018). It is a facultative colonial bird that can form breeding aggregations when food is abundant (Ortlieb 1980, Villafuerte *et al.* 1998, Mougeot & Bretagnolle 2006). Red Kites usually start to breed at 2–4 years of age, but they can take up to 7 years to reach sexual maturity. Egg laying usually takes place in March–April, and the clutch size is typically 1–3, up to 5. Eggs are incubated for 31–32 days, and fledging takes place at the age of 50–60 days (Davies & Davies 1973, Bustamante 1993, Newton *et al.* 1989, Veiga & Hiraldo 1990, Newton *et al.* 1996, Evans *et al.* 1999, Sergio *et al.* 2005, Mougeot & Bretagnolle 2006). Most Red Kites in north-eastern Europe are migrants (García-Macía *et al.* 2021), and they move southward, mainly to the Iberian Peninsula and France, to spend the wintering season (Del Hoyo *et al.* 1994, Fabienne 2009, De la Puente & De la Torre 2015). However, there are also breeding populations in the southern distribution range as in Spain, which has the third largest population after Germany and France (BirdLife International, 2019). In the most recent census, the breeding pairs in Spain were estimated at 2,312–2,440 pairs (Molina 2015).

2.2. Tagging

From 2013 to 2017, 28 adult Red Kites (6 males and 22 females) were captured and tagged in different Spanish provinces (Supplementary Material Table S1). We used the data of 47

breeding events (Supplementary Material Table S2), and a total of 55,869 locations, with an average of $1,190 \pm 432$ locations per event. Adult birds were trapped using a dho-gaza net with an Eagle Owl (*Bubo bubo*) decoy (De la Puente & Cardiel 2009), while one individual was tagged as a chick in the nest. All individuals were weighed and ringed, and a blood sample was obtained for sex determination by DNA. Birds were tagged using a GPS/satellite transmitter that was affixed to the back using a Teflon harness, a non-abrasive material, fixed with several cotton thread stitching points to be safely released from the birds once they ceased to function after about five years (Garcelon 1985; García *et al.*, 2021). The weight of tags was below the recommended 3% of the birds' body mass (Kenward 2001; mean percentage \pm SD = $2.30 \pm 0.19\%$, range = 1.90–2.62%). Birds were released within 30 min after capture.

We used different transmitter models: 20–23-g SAKER GPS-GSM (Ecotone Telemetry; $n=26$), 22-g PTT-100 solar-powered Argos/GPS (Microwave Telemetry Inc.; $n=2$) or 30-g PTT solar Argos/GPS (Microwave Telemetry Inc.; $n=1$). Ecotone and 30-g Microwave tags were programmed to collect locations every hour from 06:00 to 19:00 h (local hour), and 30-g Microwave tag had the same duty cycle but until 20:00 h. 22-g Microwave transmitters recorded 1 location per hour from 06:00 to 18:00 h. Thus, all tags provided fixes at a 1-hour frequency.

2.3. Spatial parameters and analysis

We defined the “breeding period” as the time from 1 March to 30 June, since the first laying takes place between March and April and chicks leave the natal area 10–12 weeks after hatching (Bustamante 1993, Newton *et al.* 1996, Mougeot *et al.* 2011, Nachtigall & Herold 2013). Hence, our study covered the crucial stages of the breeding period (incubation and chick-rearing). It was verified by field observations that all individuals used in this study reproduced successfully, and incubation and chick-rearing took place between March and June. We excluded the breeding events with less than 3 complete months of data from the analyses, due to individual deaths or transmitters failures.

We estimated the breeding home range for each breeding season with the 95%, 75%, and 50% fixed Kernel Density Estimation (KDE; Worton 1989) using the Animal Movement extension for ArcView 3.2 (Hooge & Eichenlaub 1997). We used the least squares cross-validation procedure to calculate the smoothing parameter S (Silverman 1986). We also calculated the 100% Minimum Convex Polygon (MCP) encompassing all the locations for each breeding season. The different polygons were transformed into an Equal-Area Cylindrical projection. We calculated the distance to the nest position (the nest used during the respective year) of every recorded location of all Red Kites and the distance covered (km) in 1 h using only consecutive locations (Mellone *et al.* 2012, García-Macía *et al.* 2021).

We analyzed sex differences in the home range sizes, distances to nest, and travelled distances. We used the different measurements of home range areas (MCP and KDEs), the average daily distances to the nest, and the average daily hourly travelled distances as response variables in six different linear mixed models (LMM). In all models, “sex” was included as fixed factor. “Year” was included as random effect in the models with the estimated areas (MCP and KDE; km²) as response variables, while “individual” identity and “year” were included as random effects in the models with the distances to the nest and the hourly travelled distances as response variables. The requirements to perform the LMMs were verified, including the normality of residuals with the Shapiro-Wilk test. The response variables were log-transformed to fulfill that requirement (Mean \pm SD after transformation: MCP = 4.45 ± 1.28 ; KDE95 = 0.37 ± 1.64 ; KDE75 = -0.60 ± 1.58 ; KDE50 = -1.30 ± 1.58 ; travelled distances = -1.167 ± 1.59 ; distance to nest = 0.96 ± 1.58).

Kruskal-Wallis test (data were non-normal) was used to determine if there were significant differences in the travelled distance between the different hours of the day. Games-Howell test (Zar 1999) was used to check if there was a peak of hourly activity throughout the day.

All statistical analyses were performed with IBM SPSS Statistics v. 22.0 (IBM Corp. 2020) and R Statistics v. 4.0.5 (R Core Team 2022). The significance level was established at $p < 0.05$.

2.4. Habitat selection

To determine the habitat selection within the home ranges, we used the CORINE 2018 land cover map (raster resolution = 100 m) provided by the European Environment Agency (2018). We grouped the original land cover classes (“CLC”) into nine categories to facilitate the interpretation of the results (Fig. 1): artificial surfaces (CLC codes: 111–142), non-irrigated arable land (CLC code: 211), permanently irrigated land (CLC code: 212), permanent crops and pastures (CLC code: 221–231), heterogeneous agricultural areas (CLC codes: 241–244), forests (CLC codes: 311–313), scrub and/or herbaceous vegetation associations (CLC codes: 321–324), open spaces (bare rocks or sparsely vegetated areas; CLC code: 331–335) and wetlands and water bodies (CLC code: 411–523).

We performed a third-order habitat selection (Johnson 1980) analysis to evaluate whether Red Kites are found in certain habitats more frequently than expected by their availability, comparing the observed values against a set of random samples (Gotelli & Ellison 2004). First, we generated 2000 random points within each MCP of each breeding season, which represents the maximum potential area used by the individuals. Then, we assigned the corresponding habitat type to

every random point and to every real location recorded during the breeding season. We used Monte Carlo simulations to determine habitat preferences, comparing the frequency of real tracking data with the generated random locations (Manly 1997, Soutullo *et al.* 2008, Limiñana *et al.* 2012, López-López *et al.* 2016, Vidal-Mateo *et al.* 2019). These expected frequencies were calculated by sampling the same number of real locations from the generated random points; this process was repeated 1,000 times using the “shuffle rows” option in Excel’s PopTools add-in (Hood 2010). The observed values (tracking data) were compared against 1,000 generated random locations with Monte Carlo analysis using Excel’s PopTools. Comparisons were two-tailed, and the significance level was established at $p < 0.05$.

3. Results

The average home range area during the breeding season was 3.65 km² according to 95% KDE, 1.48 km² to 75% KDE, 0.78 km² to 50% KDE, and 169.15 km² to MCP (Table 1). Males had larger 95% KDEs than females (4.48 km² vs. 3.30 km²). We did not find significant differences between sexes according to the rest of the home range sizes

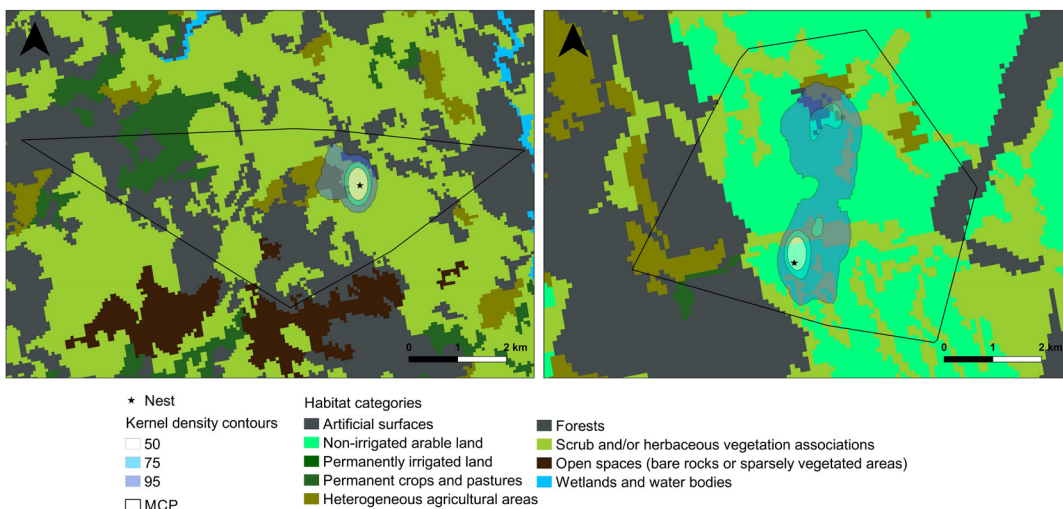


Fig. 1. Example of two home range areas of adult Red Kites tracked by GPS satellite telemetry during the breeding season. Polygons represent Kernel Density Estimations (KDE) and Minimum Convex Polygon (MCP). Left: male in Ávila; right: female in Madrid (Spain).

Table 1. Home range size (in km²), mean distance to nest and hourly distances of 47 breeding seasons of Red Kites tracked by GPS satellite telemetry in Spain according to their sex and migratory or resident behaviour. Results are expressed as mean and standard deviation. Minimum and maximum values appear in parenthesis. MCP: Minimum Convex Polygon; KDE: Kernel Density Estimation.

	n	MCP (km ²)	95% KDE (km ²)	75% KDE (km ²)	50% KDE (km ²)	Mean distances to nest (km)	Mean hourly distances (km per h)
Overall	47	169.15 ± 187.43 (7.30–832.71)	3.65 ± 4.26 (0.06–17.94)	1.48 ± 2.23 (0.02–10.47)	0.78 ± 1.26 (0.01–5.95)	1.14 ± 0.75 (0.15–3.96)	0.94 ± 0.61 (0.16–3.36)
Males	14	181.01 ± 128.51 (23.85–404.81)	4.48 ± 2.62 (0.84–9.36)	1.13 ± 0.92 (0.29–3.22)	0.46 ± 0.41 (0.15–1.58)	1.41 ± 0.36 (1.05–2.38)	1.48 ± 0.30 (1.17–2.39)
Females	33	164.12 ± 209.06 (7.30–832.71)	3.30 ± 4.78 (0.06–17.94)	1.64 ± 2.60 (0.02–10.47)	0.91 ± 1.47 (0.01–5.95)	1.02 ± 0.85 (0.15–3.96)	0.71 ± 0.56 (0.16–3.36)

estimators (MCP, 75% KDE, and 50% KDE), but the estimates of the models indicated the same trend, and female home range tended to be smaller (Table 1, Fig. 2).

We also found significant differences between sexes in the distances to the nest and the hourly travelled distances. Females stayed closer to the nest than males (EMMs = -1.58 vs. 0.04) and performed shorter movements (EMMs = -1.34 vs. 0.17 ; Fig. 2, Table 2). Males stayed at 1.41 ± 0.36 km from the nest, while females stayed at 1.02 ± 0.85 (Table 1). Females had a higher frequency of locations (69.1%) at distances <250 m from the nest (Fig. 3), while males had a higher frequency than females at distances > 1 km from the nest (45.7% and 16.7%, respectively). The frequency of distances recorded at > 5 km from the nest was low for both sexes (Fig. 3). The maximum distances reached during the entire breeding season ranged between 2.89 and 47.61 km, but they were usually (61% of seasons) less than 15. (Supplementary Material Table S2). On the other hand, males travelled 1.48 ± 0.30 km per hour, while females travelled 0.71 ± 0.56 (Table 1). 67.5 % of movements for females had a length <250 m (Fig. 4), with differences in these frequencies comparing them to males ($\chi^2 = 9294.01$, $df=6$, $p<0.001$). Only 22.6% of movements for males were <250 m, whereas they had a higher frequency of longer distance movements (>1 km): 53.8% vs. 18% of females (Fig. 4).

The frequency of movements varied according to the hour of the day, in both sexes

(males: $\chi^2=2220.67$, $df=78$, $p<0.001$; females: $\chi^2=1595.57$, $df=78$, $p<0.001$). Although we observed no prominent peak of activity in the analyses, the frequency of short movements were higher during the first and last hours of the day, whereas the frequency of long movements increased during the central hours of the day (10–16 h). This temporal pattern was shown by both males and females (Fig. 5). The Red Kites in our study mainly used areas occupied by scrub, herbaceous vegetation, and crops (Fig. 1, Table 3). Most locations occurred in scrub and/or herbaceous vegetation associations (34.83%) and non-irrigated arable land (23.05%), which were used more frequently than expected from their availability. Red Kites also showed a preference for permanent crops, pastures, and heterogeneous agricultural areas. In contrast, forests were used less than expected from their availability, although the number of locations recorded in this habitat was high (21.87%). Permanently irrigated lands and open spaces were also avoided.

From the 29 tagged Red Kites, 17 remained close to the breeding area during the whole year (58%), 4 individuals (14%) performed short distance migrations (range = 299–560 km) within the Iberian Peninsula, and 8 individuals (28%) made post-reproductive movements after the chicks had left the nest. These movements covered distances between 100 and 600 km and lasted between 2 and 8 weeks. In some cases, this was a consistent pattern in subsequent years, but not in others.

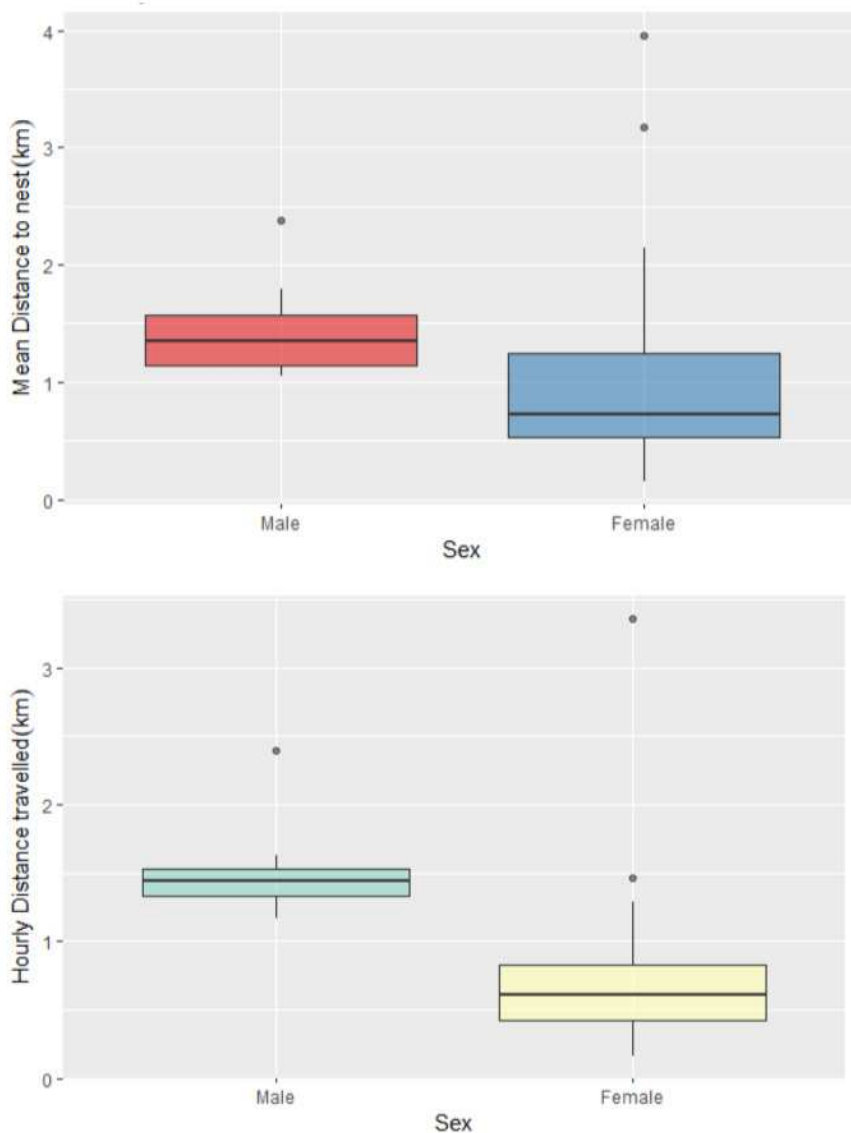


Fig. 2. Differences between sexes according to mean distances to nest and hourly travelled distances (raw data).

4. Discussion

Our study provides the first description, and comparison between sexes, of breeding home ranges and movement patterns of Red Kites breeding in Spain. We showed how female Red Kites had smaller breeding areas than males, stayed closer to the nest, and had lower mobility during the reproductive season. We also studied the habitat preferences of the species, highlighting the

importance of the agroforestry landscapes for its conservation.

According to the Minimum Convex Polygon, the home range size was 169 km² on average, similar to other home MCP estimations for the Red Kite using both GPS tracking (Mammen *et al.* 2014, Pfeiffer & Meyburg 2015), and direct observations or VHF tracking (Porstendörfer 1994, Porstendörfer 1998, Walz 2001, Nachtigall *et al.* 2010, Nachtigall & Herold 2013, Mammen

Table 2. Results of the linear mixed models (LMM) of home range areas and distances. A) Comparison between sexes (fixed effect), B) Information about random effects of the model. Estimates, standard error (SE), standard deviation (SD), degrees of freedom (df), and p-value are shown. MCP: Minimum Convex Polygon; KDE = Kernel Density Estimation. Response variables were log-transformed to comply with the normality of residuals.

A) Fixed effect (Sex)						B) Random effects		
Variable	Fixed factor	Estimate	SE	df	p-value	Variable	Random effects	SD
KDE 95% (n=47)	Intercept	0.278	0.107	45	0.0130	KDE 95% (n=47)	Year	0.0004
	Sex (Male)	0.281	0.107	45	0.0115		Residuals	0.06
KDE 75% (n=47)	Intercept	-0.206	0.109	45	0.065	KDE 75% (n=47)	Year	0.002
	Sex (Male)	0.141	0.109	45	0.202		Residuals	0.681
KDE 50% (n=47)	Intercept	-0.553	0.125	1.75	0.059	KDE 50% (n=47)	Year	0.101
	Sex (Male)	0.083	0.109	43.99	0.453		Residuals	0.686
MCP (n=47)	Intercept	1.946	0.127	2.23	0.003	MCP (n=47)	Year	0.164
	Sex (Male)	0.151	0.085	43.59	0.085		Residuals	0.532
Distance to nest (daily average; n=5302)	Intercept	-0.234	0.120	6.50	0.0444	Distance to nest (n=5302)	Individual	0.2503
	Sex (Female)	-0.370	0.061	19.67	<0.001		Year	0.228
Hourly distance (daily average; n=5302)	Intercept	-0.3215	0.133	7.43	0.0445	Hourly distance (n=5302)	Residuals	0.631
	Sex (Female)	-0.396	0.074	19.61	<0.001		Individual	0.305
							Year	0.246
							Residuals	0.671

et al. 2014). However, the smaller home range sizes estimated and the great frequency of distances close to the nest indicate the Red Kites concentrated their movements on smaller surfaces during breeding. Indeed, the 95% KDE (3.65 km²) was fifty times smaller on average than MCP estimations, and more than 90% of the total locations were less than 5 km from the nest. The Kernel Density Estimations (or similar analyses to estimate home range sizes) based on GPS telemetry provide very useful information to understand the breeding and foraging behavior of raptors, because they exclude unrepresentative outliers and provide accurate estimations of the core territory of the species.

The variability found in the home range sizes estimators (*e.g.*, 95% KDE range = 0.06–17.94; Table 1) may be due to several factors. Better environmental conditions and food resources allow birds to reduce their home range (Hernández-Pliego *et al.* 2017, Tucker *et al.* 2019). On the other hand, the smaller number of fledglings per

nest, the larger the adults' breeding area (Pfeiffer & Meyburg 2015). The period considered for the analyses may also affect the home range estimations. 95% KDE provided by Pfeiffer and Meyburg (2015) was thirty times larger than ours, probably because they included a few weeks more than we did, when individuals had greater mobility. The breeding season could be divided into several phases, characterized by different degrees of movements in the couple, being the chick-rearing and post-fledging the phases with higher mobility (López-López *et al.* 2021). Other factors, such as the nutritional stage of the chicks and GPS sampling frequency, might also explain the differences in the home range estimations between different studies or within the individuals in the same study. More studies with Red Kites' pairs, and considering the different phases of breeding, should be conducted in the future to have more specific knowledge about the spatial ecology of this species during breeding (Worton, 1989).

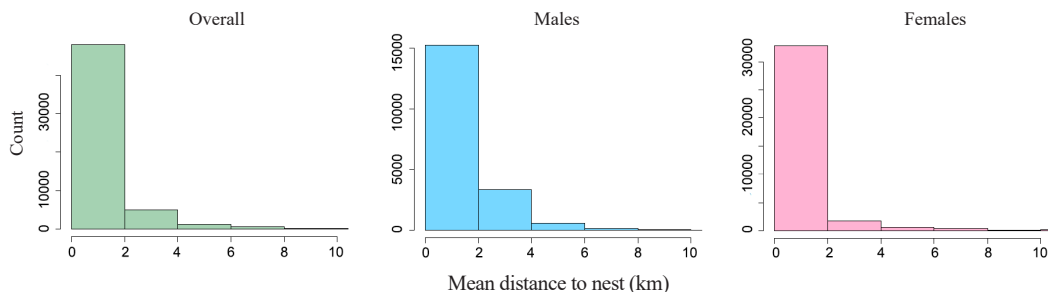


Fig. 3. Frequency of movements according to the distance to the nest categorized by sex.

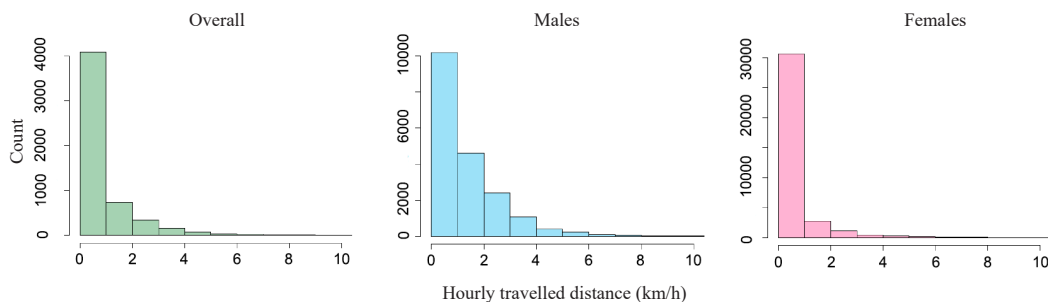


Fig. 4. Frequency of movements recorded at 1 h intervals categorized by sex.

Female Red Kites usually used smaller areas and had less mobility than males during the breeding season. Females showed smaller 95% KDEs, higher frequencies of locations very close to the nest, and shorter movements than males. Not all sex comparisons using the rest of the home range estimators (MCP, 75% KDE, and 50% KDE) were significant, but the slopes of the models were always positive for the males compared to the females, which indicates the same tendency. The absence of significance in some models may be due to the small sample size ($n=47$), or other environmental factors not considered in the models. In any case, the sex differences may be due to the different roles assumed by the members of the pair. On the one hand, females probably spent more time incubating the eggs, protecting the chicks, and providing food to the nest from its surroundings. On the other hand, males may travel to habitats with higher productivity for hunting, even if these were far from the nest. Thus, this role differentiation allows both the protection of the nest and the feeding of the chicks, improving breeding performance (Keeley & Bechard 2017, Martínez *et al.* 2020, López-López *et al.* 2021).

Red Kites showed a preference for lands occupied by scrub, herbaceous vegetation, and non-irrigated crops, which may influence the location of the nests in those habitats (Heuck *et al.* 2013). In fact, our results showed that Red Kites concentrated their movements around the nest. We suggest that the selection of open wooded lands (Del Hoyo *et al.* 1994, Bird Life International 2019) could be linked to the location of carrions and preys. Although this species has scavenging habits, visiting supplementary feeding stations or dumps, they can also hunt small mammals and birds, or even reptiles and amphibians (Cramp & Simmons 1980, Blanco *et al.* 1990, García *et al.* 1998, García & Viñuela 1999, Mougeot & Bretagnolle 2006). The selection of certain types of crops highlights the importance of conserving the agroforestry landscape and its heterogeneity. The Red Kite may be sensitive to changes in land use, including the substitution of traditional crops and the homogenization of landscapes (Viñuela *et al.* 1999, Knott *et al.* 2009).

The striking diversity of post-reproductive strategies performed by the Spanish breeding population of the Red Kite may be one of the keys for

Table 3. Habitat selection for Red Kite in Spain during the breeding season. The percentage of locations in each habitat type is indicated for the observed locations and for the expected values. P-value for the comparison between the observed locations and random points is indicated. (+), habitat is selected; (–), habitat is avoided.

Habitat type	Random points (%)	GPS locations (%)	p-value
Artificial surfaces	3.00	0.93	<0.001 (–)
Non-irrigated arable land	20.41	23.05	<0.001 (+)
Permanently irrigated land	1.83	0.45	<0.001 (–)
Permanent crops and pastures	5.41	6.66	<0.001 (+)
Heterogeneous agricultural areas	10.04	12.05	<0.001 (+)
Forests	24.57	21.87	<0.001 (–)
Scrub and/or herbaceous vegetation associations	32.39	34.83	<0.05 (+)
Open spaces (bare rocks or sparsely vegetated areas)	1.48	0.06	<0.001 (–)
Wetlands and water bodies	0.87	0.09	<0.001 (–)
Total number of locations	94000	55869	

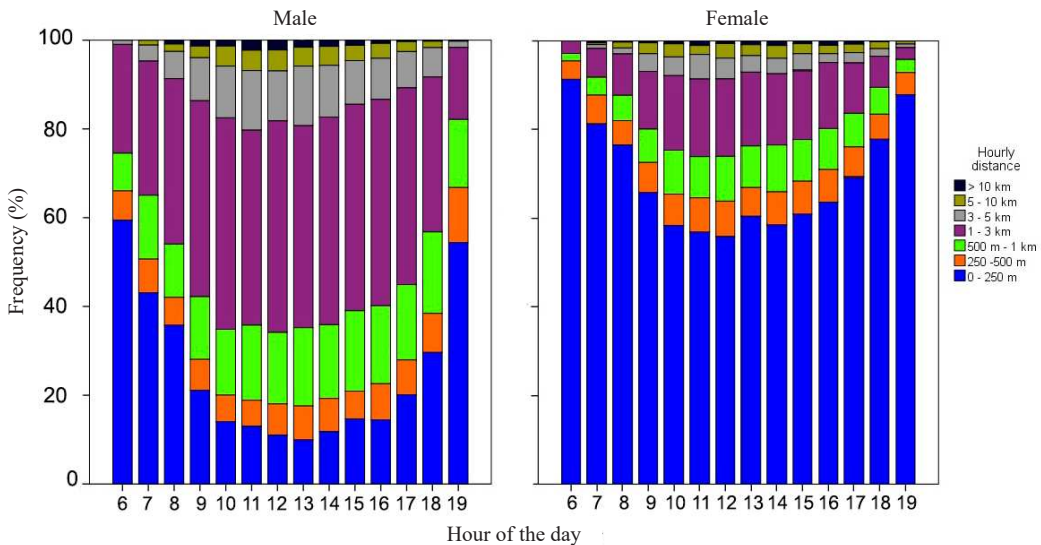


Fig. 5. Frequency of movements recorded at 1 h intervals categorized by different distance ranks per sex according to the time of day.

its conservation. Our tracking data revealed that part of the breeding population in Spain performs short-distance migratory movements, whereas other part engages in post-breeding movements across the Iberian Peninsula. This variability in the post-reproductive behaviour of the Spanish Red Kites may respond to several environmental factors, but we consider that availability of food and knowledge of the breeding area could be the

most important ones (McIntyre & Schmidt 2012). Moreover, the short migration and post-reproductive movements in the Spanish breeding population are not constant among years for the same individuals. The Red Kites might change their post-breeding strategy depending on availability of resources (Joseph *et al.* 2003, Bildstein 2006, Losos & Ricklefs 2009, Gangoso *et al.* 2013). Further studies could relate the inconsistency of

behaviour between consecutive years to the availability of resources or any other factor.

In conclusion, our study provides the first data about travelled distances and home range sizes of the Red Kites during the breeding season in Spain, proving the differences between sexes. This study allows a better knowledge of the reproductive spatial ecology of this species, which could be essential for the conservation of the threatened breeding Spanish population.

Isohaarahaukan lisääntymisajan spatiaalinen ekologia Espanjassa

Isohaarahaukan (*Milvus milvus*) lisääntymisen ajan spatiaalisesta ekologiasta tiedetään vähän, vaikka pesimisajan ekologian ymmärtämisellä on tärkeä merkitys lajin suojelun kannalta. Espanjasta löytyy Euroopan suurimpia pesiviä populaatioita, mutta kanta on pienemässä. Tässä tutkimuksessa asennettiin gps-lähettimeä 28 pesivään aikuiseen isohaarahaukkaan lisääntymisajanjaksolla (maalis–kesäkuu). Tavoitteena oli tutkia sukupuolten välisiä liikkumiseroja ja habitaatin valintaa. Havaitsimme naaraiden liikkumisalueiden olevan pienempiä kuin koiraiden. Naaraat myös liikkuvat hitaammin ja pysyivät lähempänä pesää. Naaraat olivat useammin alle 250 metrin päässä pesästä ja koiraat useammin yli kilometrin päässä pesästä. Yli viiden kilometrin etäisyydet pesästä olivat harvinaisia sekä naaraila että koiraila, ja kaukaisimmat havainnot olivat yleensä alle 15 kilometriä pesästä. Lentäminen oli yleisintä 1–3 kilometrin etäisyydellä keskipäivällä molemmilla sukupuolilla. Isohaarahaukat suosivat enimmäkseen keinokastelemattomia peltoja, metsiä, pensaikkoja ja ruohomaita. Koska isohaarahaukat suosivat tiettyjä viljelyjä, maa- ja metsätalouden ympäristöillä on tärkeä merkitys lajin suojelussa. Tutkimuksessa dokumentoimme myös ensimmäistä kertaa, että osalla tutkimastamme espanjalaisesta populaatiosta muuttomatkat ovat lyhyitä (ts. ne pysyvät Iberian niemimaan alueella), kun taas toinen osa populaatiosta liikkuu kesäisin laajemmalla alueella, kun pesintä on ohi.

Acknowledgements. We are grateful to all volunteers that helped during all the fieldwork. Specially, we want to thank for their help in fieldwork to: Alberto Díez,

Ernesto Madejón, Hugo Sánchez Joaquín Sanz-Zuasti, Juan Carlos Perlado, Juan Pablo Castaño, Mikel Olano, Manuel Gómez Duchel, Marcelino Cardalliagué, María José Herrero Nicolás González, Rafael Guadalfajara, Roberto Antor, Ramón Elosegui y Teófilo Martínez. Information about tagged Red Kites has been obtained within the ‘Migra’ program developed by SEO/BirdLife, with the collaboration of Fundación Iberdrola España. We are thankful to all regional governments that gave the necessary permissions: Comunidad de Madrid, Junta de Castilla y León, Govern Illes Balears, Junta de Castilla-La Mancha, Junta de Extremadura, Diputación Foral de Gipuzkoa, Gobierno de Aragón, Gobierno del País Vasco. The data of the bird tagged in the Balearic Islands has been provided by Grup Balear d’Ornitologia (GOB). Funding for tagging the other birds was provided by Fundación Iberdrola España, Gobierno de Aragón, Comunidad de Madrid, Gobierno del País Vasco, Fundación Patrimonio Natural de Castilla y León, EDP Renovaveis, Artesa, Garona and Gavia. J. Vidal-Mateo was supported by a FPU grant of Spanish Ministry of Education (reference FPU014/04671).

References

- Aebischer, A. 2010: Distribution and recent population changes of the Red Kite in the Western Palaearctic – results of a recent comprehensive inquiry. — Proceedings of the International Red Kite symposium 2009: 12–14.
- Berny, P. & Gaillet, J. R. 2008: Acute poisoning of Red Kites (*Milvus milvus*) in France: dates of the SAGIR network. — Journal of Wildlife Diseases 44: 417–426. <http://dx.doi.org/10.7589/0090-3558-44.2.417>
- BirdLife International 2019: Species factsheet: *Milvus milvus*. Downloaded from <http://www.birdlife.org> on 02/05/2019.
- Bildstein, K.L. 2006: Migrating raptors of the world: their ecology & conservation. — Cornell University Press, New York, USA.
- Blanco, J. C., Hiraldo F. & Heredia B. 1990: Variations in the diet and foraging behaviour of a wintering red kite (*Milvus milvus*) population in response to changes in food availability. — Ardeola 37: 267–278. <https://www.ardeola.org/en/volumes/372/articles/267-278/?stc=ok>
- Bustamante, J. 1993: Postfledging dependence period and development of flight and hunting behavior in the red kite *Milvus milvus*. — Bird Study 40: 181–188. <https://doi.org/10.1080/00063659309477181>
- Cardiel, I. 2006: El milano real en España. II Censo Nacional (2004). — SEO/BirdLife, Madrid. (In Spanish)
- Carter, I. (ed.) 2001: The Red Kite. — Chelmsford,

- Arlequin Press, UK.
- Cereghetta, E. Scherler, P., Fattedberta, J. & Grueblera, M.U. 2019: Quantification of anthropogenic food subsidies to an avian facultative scavenger in urban and rural habitats. — *Landscape and Urban Planning* 190: 1–10. <https://doi.org/10.1016/j.landurbplan.2019.103606>
- Clutton-Brock, T.H. 1991: The evolution of parental care. — Princeton University Press, USA.
- Cramp, S. & Simmons, K. E. L. 1980: Handbook of the Birds of Europe, the Middle East and North Africa. The Birds of the Western Palearctic Vol. 2. — Oxford University Press, Oxford.
- Davies, P. W. & Davis, P. E. 1973: The ecology and conservation of the Red Kite in Wales. — *British Birds* 66: 183–224.
- De la Puente, J. & Cardiel, I. 2009: Efectividad de las redes dho-gaza y búho real naturalizado para la captura de milanos reales (*Milvus milvus*) reproductores. — *Revista de Anillamiento* 24: 16–19. (In Spanish)
- De la Puente, J. & De la Torre, V. 2015: Abstracts book of the II International Symposium on the Red Kite. Binaced (Huesca, Spain) 2015. — Grupo Ornitológico SEO-Monticola & Fondo de Amigos del Buitre, Madrid.
- Del Hoyo, J., Elliott, A. & Sargatal, J. 1994: Handbook of the Birds of the World Vol. 2: New World Vultures to Guineafowl. — Lynx Edicions, Barcelona.
- European Environment Agency. 2018: CLC 2018 - Copernicus Land Monitoring Service. Available at <https://land.copernicus.eu/pan-european/corine-land-cover/clc2018> (Accessed 24/11/2022)
- Evans, I. M., Summers, R. W., O'Toole, L., Orr-Ewing, D. C., Evans, R. D., Snell, N. & Smith, J. 1999: Evaluating the success of translocating Red Kites *Milvus milvus* to the UK. — *Bird Study* 46: 129–144. <https://doi.org/10.1080/00063659909461125>
- Fabienne, D. 2009: Proceedings of the Red Kite international Symposium. — LPO, France.
- Gangoso, L., López-López, P., Grande, J.M., Mellone, U., Limiñana, R., Urios, V. & Ferrer, M. 2013: Ecological Specialization to Fluctuating Resources Prevents Long-Distance Migratory Raptors from Becoming Sedentary on Islands. — *PLoS ONE* 8(4): e61615. <https://doi.org/10.1371/journal.pone.0061615>
- Garcelon, D. K. 1985: Mounting backpack telemetry packages on bald eagles. — Institute for Wildlife Studies, Arcata (California).
- García, J. T. & Viñuela, J. 1999: Importancia de los muladares para la conservación del Milano Real en España. — In *El Milano Real en España. Censo, Distribución y Conservación* (ed. Viñuela, J., Martí, R. & Ruiz, A.): 187–198. SEO/BirdLife, Madrid. (In Spanish)
- García, J. T., Viñuela, J. & Sunyer C. 1998: Geographic variation of the winter diet of the Red Kite *Milvus milvus* in the Iberian Peninsula. — *Ibis* 140: 302–309. <https://doi.org/10.1111/j.1474-919X.1998.tb04393.x>
- García, V., Iglesias, J.J. & Moreno-Opo, R. 2021: Null effects of Garcelon harnessing method and transmitter type on soaring raptors. — *Ibis* 163(3): 899–912. <https://doi.org/10.1111/ibi.12942>
- García-Macia, J., Vidal-Mateo, J., De la Puente, J., Bermejo, A., Raab, R. & Urios, V. 2021: Seasonal differences in migration strategies of Red Kites (*Milvus milvus*) wintering in Spain. — *Journal of Ornithology* 163: 27–36. <https://doi.org/10.1007/s10336-021-01918-5>
- Gotelli, N. J. & Ellison, A. M. 2004: A primer of ecological statistics. — Sinauer Associates, Sunderland.
- Heuck, C., Brandl, R., Albrecht, J. & Gottshalk, T.K. 2013: The potential distribution of the Red Kite in Germany. — *Journal of Ornithology* 154: 911–921. <https://doi.org/10.1007/s10336-013-0955-2>
- Hernández-Pliego, J., Rodríguez, C., Dell’Omo, G. & Bustamante, J. 2017: Combined use of tri-axial accelerometers and GPS reveals the flexible foraging strategy of a bird in relation to weather conditions. — *PLoS ONE* 12: e0177892. <https://doi.org/10.1371/journal.pone.0177892>
- Hood, G. M. 2010: PopTools version 3.2.5. Accessed at <http://www.poptools.org>
- IBM Corp. 2020: IBM SPSS Statistics for Windows, Version 27.0. IBM Corp, Armonk, NY.
- Hooge, P. N. & Eichenlaub, B. 1997: Animal Movement Extension for ArcView. — Alaska Science Center, Biological Science Office, U. S. Geological Survey, Anchorage, AK.
- IUCN 2018: The IUCN Red List of Threatened Species. Version 2018-1. Accessed at www.iucnredlist.org on 04/04/2019.
- Johnson, D.H. 1980: The Comparison of Usage and Availability Measurements for Evaluating Resource Preference. — *Ecology* 61(1): 65–71.
- Joseph, L., Wilke, T. & Alpers, D. 2003: Independent evolution of migration on the South American landscape in a long-distance temperate-tropical migratory bird, Swainson’s flycatcher (*Myiarchus swainsoni*). — *Journal of Biogeography* 30: 925–937. <https://doi.org/10.1046/j.1365-2699.2003.00841.x>
- Kays, R., Crofoot, M. C., Jetz, W. & Wikelski, M. 2015: Terrestrial animal tracking as an eye on life and planet. — *Science* 348: aaa2478. <https://doi.org/10.1126/science.aaa2478>
- Keeley, W.H. & Bechard, M.J. 2017: Nesting behavior, provisioning rates, and parental roles of Ferruginous Hawks in New Mexico. *Journal of Raptor Research* 51: 397–408. <https://doi.org/10.3356/JRR-16-85.1>
- Kenward, R. E. 2001: A Manual for Wildlife Radio Tagging. — Academic Press, London.
- Knott, J., Newbery, P. & Barov, B. 2009: Action plan for the red kite *Milvus milvus* in the European Union. — BirdLife International for the European Union.
- Limiñana, R., Soutullo, A., Arroyo, B. & Urios, V. 2012: Protected areas do not fulfil the wintering habitat needs of the trans-Saharan migratory Montagu’s harrier. — *Biological Conservation* 145: 62–9. <https://doi.org/10.1016/j.biocon.2012.05.018>

- org/10.1016/j.biocon.2011.10.009
- López-López, P., De la Puente, J., Mellone, U., Bermejo, A. & Urios, V. 2016: Spatial ecology and habitat use of adult Booted Eagles (*Aquila pennata*) during the breeding season: implications for conservation. — *Journal of Ornithology* 157: 981–93. <https://doi.org/10.1007/s10336-016-1357-z>
- López-López, P., Limiñana, R., Mellone, U. & Urios, V. 2010: From the Mediterranean Sea to Madagascar: Are there ecological barriers for the long-distance migrant Eleonora's falcon? — *Landscape Ecology* 25: 803–813 <https://doi.org/10.1007/s10980-010-9460-7>
- López-López, P., Perona, A., Egea-Casas, O., Morant, J. & Urios, V. 2021: Tri-axial accelerometry shows differences in energy expenditure and parental effort throughout the breeding season in long-lived raptors. — *Current Zoology* 68(1): 57–67. <https://doi.org/10.1093/cz/zoab010>
- Losos, J.B. & Ricklefs, R.E. 2009: Adaptation and diversification on islands. — *Nature* 457: 830–836. <https://doi.org/10.1038/nature07893>
- Mammen, K., Mammen, U. & Resetaritz, A. 2014: Rotmilan. Greifvögel und Windkraftanlagen: Problemanalyse und Lösungsvorschläge. Schlussbericht für das Bundesministerium für Umwelt, Naturschutz und Reaktorsicherheit. — Michael-Otto-Institut im NABU. Leibniz-Institut für Zoound Wildtierforschung, BioConsult SH, Bergenhusen, Berlin, Husum. (In German)
- Manly, B. F. J. 1997: Randomization, bootstrap and Monte Carlo methods in biology, 2nd ed. — Chapman & Hall, London.
- Martínez, J.E., Zuberogoitia, I., Escarabajal, J.M., Cerezo, E., Calvo, J.F. & Margalida, A. 2020: Breeding behaviour and time-activity budgets of Bonelli's eagles *Aquila fasciata*: marked sexual differences in parental activities. — *Bird Study* 67: 35–44. <https://doi.org/10.1080/00063657.2020.1733487>
- Mateo-Tomás, P., Olea, P.P., Mínguez, E., Mateo, R. & Viñuela, J. 2020: Direct evidence of poison-driven widespread population decline in a wild vertebrate. — *Proceedings of the National Academy of Sciences* 117 (28): 16418–16423. <https://doi.org/10.1073/pnas.1922355117>
- McIntyre, C.L. & Schmidt, J.H. 2012: Ecological and environmental correlates of territory occupancy and breeding performance of migratory Golden Eagles *Aquila chrysaetos* in interior Alaska. — *Ibis* 154(1): 124–135 <https://doi.org/10.1111/j.1474-919X.2011.01181.x>
- Mellone, U., Klaassen, R.H.G., Garcia-Ripolles, C., Limiñana, R., Lopez-Lopez, P., Pavon, D., Strandberg, R., Urios, V., Vardakis, M. & Alerstam, T. 2012: Interspecific comparison of the performance of soaring migrants in relation to morphology, meteorological conditions and migration strategies. — *PLoS ONE* 7(7): e39833. <https://doi.org/10.1371/journal.pone.0039833>
- Molina, B. 2015: El milano real en España. III Censo Nacional. Población invernante y reproductora en 2014 y método de censo. — SEO/BirdLife, Madrid. (In Spanish)
- Mougeot, F. & Bretagnolle, V. 2006: Breeding biology of the Red Kite *Milvus milvus* in Corsica. — *Ibis* 148: 436–448. <https://doi.org/10.1111/j.1474-919X.2006.00558.x>
- Mougeot, F., Garcia, J. T. & Viñuela, J. 2011: Breeding biology, behaviour, diet and conservation of the Red Kite (*Milvus milvus*), with particular emphasis on Mediterranean populations. — In *Ecology and conservation of European dwelling forest raptors and owls* (ed. Zuberogoitia, I., Martínez, J.E.): 190–204. Editorial Diputación Foral de Vizcaya, Bilbao, Spain.
- Nachtigall W. & Herold S. 2013: Der Rotmilan (*Milvus milvus*) in Sachsen und Südbrandenburg. Jahresber Monitoring Greifvögel Eulen Europas 5. — Sonderband: 1–104.
- Nachtigall, W., Stubbe, M. & Herrmann, S. 2010: Aktionsraum und Habitatnutzung des Rotmilans (*Milvus milvus*) während der Brutzeit—eine telemetrische Studie im Nordharzvorland. — *Vogel und Umw* 18: 25–61. (In German)
- Newton, I., Davis, P. E. & Davis J. E. 1989: Age of first breeding, dispersal and survival of Red Kites *Milvus milvus* in Wales. — *Ibis* 131: 16–21. <https://doi.org/10.1111/j.1474-919X.1989.tb02738.x>
- Newton, I., Davis, P. E. & Moss, D. 1994: Philopatry and population growth of red kites, *Milvus milvus*, in Wales. — *Proceedings of the Royal Society* 257(1350): 317–323. <https://doi.org/10.1098/rspb.1994.0132>
- Newton, I., Davis, P. E. & Moss D. 1996: Distribution and Breeding of Red Kites *Milvus milvus* in Relation to Afforestation and Other Land-Use in Wales. — *Journal of Applied Ecology* 33: 210–224. <https://doi.org/10.2307/2404744>
- Nur, N. 1988: The consequences of brood size for breeding blue tits. III. Measuring the cost of reproduction: survival, future fecundity, and differential dispersal. — *Evolution* 42: 351–362. <https://doi.org/10.2307/2409238>
- Ortlieb, R. 1980: Der Rotmilan *Milvus milvus*. — Ziemsen Verlag, Wittenberg Lutherstadt (Ziemsen), Germany.
- Pfeiffer, T. & Meyburg, B. U. 2015: GPS tracking of Red Kites (*Milvus milvus*) reveals fledgling number is negatively correlated with home range size. — *Journal of Ornithology* 156: 963–975. <https://doi.org/10.1007/s10336-015-1230-5>
- Porstendörfer, D. 1994: Aktionsraum und Habitatnutzung beim Rotmilan *Milvus milvus* in Süd-Niedersachsen. — *Vogelwelt* 115: 293–298. (In German)
- Porstendörfer, D. 1998: Untersuchungen zum Aktionsraum des Rotmilans (*Milvus milvus*) während der Jungenaufzucht. — *Vogelkdl Ber Niedersachs* 30: 15–17. (In German)
- R Core Team 2022: R: A language and environment for statistical computing. R Foundation for Statistical Computing, Vienna, Austria. <https://www.R-project.org/>

- Sergio, F., Blas, J., Forero, M., Ffernández, N., Donázar, J. A. & Hiraldo, F. 2005: Preservation of wide-ranging top predators by site protection: black and red kites in Doñana National Park. — *Biological Conservation* 125: 11–21. <https://doi.org/10.1016/j.biocon.2005.03.002>
- Silverman, B.W. 1986: Density estimation for statistics and data analysis. — Chapman and Hall, London.
- Soutullo, A., Urios, V., Ferrer, M. & López-López, P. 2008: Habitat use by juvenile Golden Eagles *Aquila chrysaetos* in Spain. — *Bird Study* 55: 236–40. <https://doi.org/10.1080/00063650809461528>
- Trivers, R.L. 1972: Parental investment and sexual selection. — In *Sexual Selection and the Descent of Man* (ed. Campbell, B): 136–179. Aldine Publishing Company.
- Urios, V., Romero, M. & Mellone, U. 2015: The use of satellite telemetry for the study of the movement ecology of raptors. — *Publicaciones de la Universidad de Alicante, Spain*.
- Tucker, M.A., Alexandrou, O., Bierregaard, R.O., Bildstein, K.L., Böhning-Gaese, K., Bracis, C., Brzorad, J.N., Buechley, E.R., Cabot, D., Calabrese, J.M., Andre Chiaradia, C.C., Davenport, L.C., Davidson, S.C., Desholm, M., DeSorbo, C.R., Domenech, R., Enggist, P., Fagan, W.F., Farwig, N., Fiedler, W., Fleming, C.H., Franke, A., Fryxell, J.M., García-Ripollés, C., Grémillet, D., Griffin, L.R., Harel, R., Kane, A., Kays, R., Kleyheeg, E., Lacy, A.E., LaPoint, S., Limiñana, R., López-López, P., Maccarone, A.D., Mellone, U., Mojica, E.K., Nathan, R., Newman, S.H., Noonan, M.J., Oppel, S., Prostor, M., Rees, E.C., Ropert-Coudert, Y., Rösner, S., Sapir, N., Schabo, D., Schmidt, M., Schulz, H., Shariati, M., Shreading, A., Silva, J.P., Skov, H., Spiegel, O., Takekawa, J.Y., Teitelbaum, C.S., van Toor, M.L., Urios, V., Vidal-Mateo, J., Wang, Q., Watts, B.D., Wikelski, M., Wolter, K., Żydelis, R. & Mueller, T. 2019: Large Birds Travel Farther in Homogeneous Environments. — *Global Ecology and Biogeography* 28(5): 576–87. <https://doi.org/10.1111/geb.12875>
- Veiga, J. P. & Hiraldo, F. 1990: Food Habits and the Survival and Growth of Nestlings in Two Sympatric Kites (*Milvus milvus* and *Milvus migrans*). — *Holarctic Ecology* 13: 62–71. <https://www.jstor.org/stable/3682346>
- Vidal-Mateo, J., Romero, M. & Urios, V. 2019: How can the home range of the Lesser Kestrel be affected by a large civil infrastructure? — *Avian Research* 10: 10. <https://doi.org/10.1186/s40657-019-0149-6>
- Villafuerte, R., Viñuela, J. & Blanco, J. C., 1998: Extensive predator persecution caused by population crash in a game species: The case of red kites and rabbits in Spain. — *Biological Conservation* 84: 181–188. [https://doi.org/10.1016/S0006-3207\(97\)00094-3](https://doi.org/10.1016/S0006-3207(97)00094-3)
- Viñuela, J., Martí, R. & Ruiz, A. 1999: El Milano Real en España. Monografía nº6. — SEO/BirdLife, Madrid. (In Spanish)
- Viñuela, J., De la Puente, J. & Bermejo, A. 2021. Milano real, *Milvus milvus*. — In *Libro Rojo de las Aves de España* (Ed. López-Jiménez, N.): 446–455. SEO/BirdLife, Madrid, Spain. (In Spanish)
- Walz, J. 2001: Bestand, Ökologie des Nahrungserwerbs und Interaktionen von Rot- und Schwarzmilan 1996–1999 in verschiedenen Landschaften mit unterschiedlicher Milandichte: Obere Gäue, Baar und Bodensee. — *Ornithologische Literatur mit Bezug auf Baden Württemberg* 17: 1–212. (In German)
- Williams, T.D. 2018: Physiology, activity and costs of parental care in birds. — *Journal of Experimental Biology* 221: jeb169433. <https://doi.org/10.1242/jeb.169433>
- Worton, B. J. 1989: Kernel methods for estimating the utilization distribution in home-range studies. — *Ecology* 70: 164–8. <https://doi.org/10.2307/1938423>
- Zar, J. H. 1999: *Biostatistical analysis*, 4th Ed. — Prentice Hall, Upper Saddle River, N.J. U.S.A.

Online supplementary material

Supplementary material available in the online version includes Tables S1 and S2 with metadata and information on individual parameters.